

Cosmic star-formation history from a non-parametric inversion of infrared galaxy counts

D. Le Borgne^{1,2}, D. Elbaz¹, P. Ocvirk^{1,3}, C. Pichon²

¹ CEA/Saclay, DSM/IRFU/Sap, F-91191 Gif-sur-Yvette, France

² Institut d'Astrophysique de Paris, UMR7095 CNRS, UPMC, 98bis boulevard Arago, F-75014 Paris, France

³ Astrophysikalisches Institut Potsdam, An der Sternwarte 16, D-14482 Potsdam, Germany

Received...; accepted...

ABSTRACT

Aims. This paper aims at providing new conservative constraints to the cosmic star-formation history from the empirical modeling of recent observations in the mid- and far-infrared.

Methods. We present a new empirical method based on a non-parametric inversion technique. It uses primarily multi-wavelength galaxy counts in the infrared and sub-mm (15, 24, 70, 160, 850 μm), and it does not require any redshift information. This inversion can be considered as a “blind” search of all possible evolutions and shapes of the infrared luminosity function of galaxies, from which the evolution of the SFRD and its uncertainties are derived. The cosmic infrared background (CIRB) measurements are used a posteriori to tighten the range of solutions. The inversion relies only on two hypotheses: (1) the luminosity function remains smooth both in redshift and luminosity, (2) a set of infrared spectral energy distributions (SEDs) of galaxies must be assumed, with a dependency on the total luminosity only.

Results. The range of star-formation histories recovered at low redshift is well constrained and consistent with direct measurements from various redshift surveys: redshift distributions are recovered without any input on the redshifts of the sources making the counts. A peak of the SFRD at $z \simeq 2$ is preferred, although higher redshifts are not excluded. We also demonstrate that galaxy counts at 160 μm present an excess around 20 mJy that is not consistent with counts at other wavelengths under the hypotheses cited above. Finally, we find a good consistency between the observed evolution of the stellar mass density and the prediction from our model of star-formation history.

Conclusions. Multi-wavelength counts and CIRB (both projected observations) alone, interpreted with a luminosity-dependent library of SEDs, contain enough information to recover the cosmic evolution of infrared luminosity function of galaxies, and therefore the evolution of the SFRD, with quantifiable errors. Moreover, the inability of the inversion to model perfectly and simultaneously the multi-wavelength infrared counts implies either (i) the existence of a sub-population of colder galaxies, (ii) a larger dispersion of dust temperatures among local galaxies than expected, (iii) a redshift evolution of the infrared SED of galaxies.

Key words. Galaxies: high-redshift – Galaxies: evolution – Galaxies: formation – Infrared: galaxies – Submillimeter – Galaxies: luminosity function

1. Introduction

Some key questions remain concerning the formation of galaxies, such as when and how galaxies formed their stars over the last 13 Gyr. Thanks to recent ultra-deep surveys at various wavelengths, some phenomena are now quite accurately measured and described, at least at relatively low redshift. For instance, it is well established that massive galaxies have experienced most of their star formation (SF) activity at early epochs whereas the SF activity in small galaxies keeps on average a more constant level. This so-called “downsizing” has been subject to many studies over the last few years (Madau et al. 1996; Lilly et al. 1996; Steidel et al. 1999; Juneau et al. 2005; Le Floch et al. 2005) and various signs of this downsizing are now seen. But precise measurements of the rate of stellar formation occurring at high redshift are still needed to challenge efficiently the latest models of galaxy formation. In other words, additional constraints on the modeling of the evolution of the cosmic star-formation history should be inspired by observations.

Recently, very deep surveys were designed to probe SF in the distant universe. For instance, mid-infrared light (at 15 and 24 μm) collected by the ISO and Spitzer telescopes has been used extensively to measure the star-formation rate (SFR) of both nearby and distant galaxies. The evolution of the infrared (IR) luminosity functions (hereafter LF), parameterized in shape (e.g. with Schechter functions) has been measured up to $z = 2$ with, again, a parameterization for the evolution which can be both in luminosity ($(1+z)^{\alpha_L}$) or in density ($(1+z)^{\alpha_D}$). From these studies (Le Floch et al. 2005; Babbedge et al. 2006; Caputi et al. 2007), several values of α_L and α_D have been measured, in various redshift ranges, and have been used to derive the evolution of the SFRD. Such works bring very solid basis to our understanding of galaxy evolution, but they are generally limited to relatively low redshifts for two reasons. First, they are very expensive in observation time if spectroscopic redshifts are used to derive the luminosities of the sources. Photometric redshifts can also be used to complement spectroscopic redshifts, but their uncertainties are well quantified only at low redshift, where spectroscopic redshifts are available to calibrate them. The second reason is that k-corrections of 24 μm light becomes large and hazardous at $z > 2$ where the rest-frame wavelength

falls in the PAH features. The derivation of total infrared luminosities, and therefore star-formation rates is therefore uncertain. In the following, we call “direct method” this approach which consists in deriving luminosity functions and SFRD from mid-IR light collected in redshift surveys.

However, these studies present some severe limitations. First, a full multi-wavelength approach has not yet been used to *measure* these quantities. Indeed, the studies cited above only use observations in one mid-IR band to extrapolate to a total IR luminosity and derive a SFR from uncertain calibrations (e.g. Kennicutt 1998). Moreover, various depths and areas must be explored simultaneously: on the one hand, only very deep surveys are able to probe the lowest levels of SF in distant galaxies, which is necessary to account for the total volume-average SF activity potentially dominated by numerous galaxies with low SFRs. But these very deep surveys necessarily probe only a small area in the sky. On the other hand, large (and therefore shallow) surveys are also needed to probe the populations of sources presenting a low density on the sky. It is the case for very low redshift sources and it might also be the case for the distant populations of ULIRGS¹ for instance.

A natural way to exploit this multi-wavelength and multi-scale information altogether is to adopt a global modeling approach. Ideally, the models (defined as the combination of a library of IR SEDs and of an evolving LF) must be able to account simultaneously for all the counts observed at all IR wavelengths, from faint to bright sources, but they must also account for the constraints brought by measurements of the CIRB, and from LFs measured with the “direct method”. For instance, Chary & Elbaz (2001) (hereafter CE01) and Lagache et al. (2003) (hereafter LDP03) or Franceschini et al. (2001) have found models which are able to reproduce most of these constraints. However, some adjustments of the LFs or even of the SEDs by these authors were needed to reproduce the most up-to-date observations. This modeling approach is powerful but it is also subject to caveats. Indeed, some important choices must be made on how to parameterize the shape (e.g. a double power-law, a Schechter function, or the local $15\ \mu\text{m}$ LF from Xu (2000) converted into L_{IR}) and the evolution of the LFs (e.g. with factors $(1+z)^{\alpha_L}$ and $(1+z)^{\alpha_D}$). These parameterizations rely mainly on physical intuition, and sometimes require adding more degrees of freedom. This is the case for the two populations of sources introduced by LDP03, with their LFs evolving separately from each other. Moreover, these models cannot claim to be the only possible representation of the true cosmic LFs or of the true SEDs. They are generally good enough to reproduce current observations but they are never provided with a range of uncertainties.

In this paper, we add new constraints to the decomposition of the “Lilly-Madau” SFRD diagram using a powerful non-parametric inversion technique which exploits blindly and *simultaneously* the information from the published multi-wavelength IR galaxy counts in deep and small as well as large and shallow surveys. From these counts only, and without any input information on redshifts, we derive the *range* of *all* possible evolutions and shapes of the IR LF.

In Section 2, we present the inversion method in the general case (see also Appendix A). We present in Section 3 the data and

our choice for a SED library used in this study. Section 4 contains our results: the counts inversion and the corresponding IR LFs, together with the inferred cosmic star formation history. In Section 5, we validate our inversion by comparing our empirical modeling of counts, LFs, SFRD and stellar mass density evolution to bibliographic data (see also Appendix B for the robustness of the inversion). Finally, we discuss the results and give our conclusions in section 6. Some predictions for forthcoming Herschel observations are also given in Appendix C. We will use in the following a cosmology of: $H_0 = 70\ \text{km s}^{-1}\ \text{Mpc}^{-1}$, $\Lambda = 0.7$, $\Omega_m = 0.3$. The IMF is assumed to be Salpeter (1955) unless otherwise stated (i.e. in Section 5.4).

2. Method: non-parametric inversion of deep multi- λ IR galaxy counts

In this section, we present a new approach to infer the evolution of IR LFs of galaxies from multi-wavelength and multi-scale observations of galaxy counts.

It consists in a phenomenological modeling approach, similar to the works of CE01, LDP03 and others². However, the modeling is made here in a global and flexible way: assuming that a given library of SEDs is able to account for the spectra of galaxies at any redshift (an assumption which is tested from the limits of the method’s success), we search blindly for all shapes and evolutions of the total IR LF which are able to reproduce the multi-wavelength IR counts and the CIRB. This method is *non-parametric*, i.e. it does not depend on the parameterization of the LF (in shape or evolution).

Our method exploits data from infrared surveys designed to probe high-redshift populations by using their observed galaxy number counts. However, the redshifts of the sources are not required, which makes this method quite versatile³.

An important advantage of this technique, which makes it different from all previous models for IR galaxy number counts, is that it provides an automatic, hence objective, way to sample the range of possible histories of the IR luminosity function. While previous studies have always presented their favorite model to fit the IR galaxy counts, the present work spans the range of all possible evolutions that are consistent with the observations. This results in two major improvements. First, the modeled cosmic SFR history or luminosity functions per redshift bin, are presented with their error bars. Second, it will allow us to discuss the limitation of local IR SEDs to reproduce the properties of distant galaxies. Indeed, if after spanning all possibilities, we still find that the fit is not complete, this will demonstrate that the IR SEDs must be revised, either because they provide an incomplete description of local galaxies or because they evolve with redshift.

In the two next subsections, as well as in appendix A, we present the technical and mathematical aspects of our counts modeling.

² This approach is at variance with the classical “direct” methods used for this purpose, in which luminosities of individual sources are derived from their measured redshifts and fluxes in a *single* mid-IR band.

³ It is worth noting that we can take (optionally and when available) the redshift information into account by using as priors the luminosity functions measured at low redshifts from direct methods. We will show in Section 4.4 that this knowledge of the luminosity-redshift distribution at low redshift ($z < 2$) brings actually little new to our results.

¹ We adopt the following notation in this paper:

“Normal” galaxies have $L_{\text{IR}} < 10^{11} L_{\odot}$

“LIRGS”: $10^{11} L_{\odot} < L_{\text{IR}} \leq 10^{12} L_{\odot}$

“ULIRGS”: $10^{12} L_{\odot} < L_{\text{IR}} \leq 10^{13} L_{\odot}$

“HLIRGS”: $L_{\text{IR}} > 10^{13} L_{\odot}$

2.1. Linear matrix modeling of the counts

The deep galaxy counts can be seen as the projection on a flux scale of the SEDs of galaxies of various luminosities, masses, types, etc. distributed in redshift. Therefore, to reproduce counts, one needs at least a description of the number of galaxies at various redshifts per unit volume, the SEDs of these galaxies⁴, and a cosmology.

In the following, to describe the numbers of galaxies in space and time, we use total infrared luminosity functions (LF_{IR}). Doing so, we simultaneously assume that the SED of a galaxy seen in the IR can be efficiently described by the sheer knowledge of its redshift and L_{IR} . Although such a description can be regarded as simple minded, the current knowledge of galaxy SEDs in the IR is not much better than an empirical description parameterized by L_{IR} only. Therefore, the model description that we choose is suited to the current limitations of our understanding.

For a galaxy (which IR SED is known) lying at redshift z_0 with a luminosity L_0^{IR} , we can easily compute a k-correction and a distance modulus to obtain the flux density S_0 that one would measure in a given IR filter centered at the wavelength λ_0 . This conversion only depends on the cosmology and on the SED of the galaxy.

A luminosity function being only the description of the number of sources per comoving Mpc^3 as a function of redshift and infrared luminosity L_{IR} , we can then compute a matrix which converts this evolving LF_{IR} into numbers of galaxies seen at various fluxes and through different IR filters. This matrix is simply the response function of the conversion from (z, L_{IR}) to (S, λ) presented above. Again, this matrix depends only on the cosmology and on the library of SEDs. Since it includes k-correction, distance effects (dimming as a function of the square of the luminosity distance) and redshift effects (flux density stretching and dimming), we call it the “k+d” matrix in the following⁵.

After discretisation, and using a matrix notation, the inverse problem can be formalized as

$$\mathbf{Y}(\lambda, S) = \mathbf{M}(\lambda, S, z, L_{\text{IR}}) \cdot \mathbf{X}(z, L_{\text{IR}}), \quad (1)$$

where \mathbf{Y} is the matrix containing the number counts at fluxes S in bands λ , \mathbf{M} is the above-mentioned “k+d” transformation matrix, and \mathbf{X} is the LF_{IR} which is a function of z and L_{IR} only (see Appendix A for details).

Therefore, our problem involves inverting this linear equation to find the evolving LFs (i.e. redshift dependent number counts per unit volume), \mathbf{X} , from the known values of \mathbf{Y} (the wavelength dependent observed number counts per unit area). Because the matrix, \mathbf{M} , is not square, and because the number counts are noisy and must be positive, the solution is not quite as simple as using the pseudo inverse: $\mathbf{X} = \mathbf{M}^{(-1)} \cdot \mathbf{Y}$, and requires computing a regularized solution as discussed below and detailed in Appendix A. The reader may also refer to, e.g. Pichon et al. (2002) or Ocvirk et al. (2006b). Note that the uncertainties on the observed counts \mathbf{Y} are taken into account through an additional error matrix \mathbf{W} which makes it possible to compute a χ^2 between the model \mathbf{X} and the data \mathbf{Y} and to derive uncertainties on the recovered LF.

In this formalism, we choose to describe the luminosity function in a logarithmic scale, taking everywhere $\log_{10} L_{\text{IR}}$ instead

⁴ In this subsection presenting the formalism in the general case, an evolution of the SEDs is considered as possible.

⁵ If the SEDs vary not only with L_{IR} but also with z , we include formally the evolution in the “k-correction” term.

of L_{IR} . This is justified by the better conditioning of the inversion in this case because the LF_{IR} spans generally several orders of magnitudes in luminosity. For the same reason, the counts are treated numerically through their Euclidian differential form $dN/dS \times S^{2.5}$ (units of $\text{mJy}^{1.5} \text{deg}^{-2}$) which varies slowly with flux. The evolution is measured as a function of $\log_{10}(1+z)$. Indeed, in the following, we impose a smooth evolution in redshift of the luminosity function and we need to define the temporal parameter on which this smoothing applies. We find that the simplest redshift description which corresponds roughly to a regular time sampling is actually $\log_{10}(1+z)$. A parameterization with z or with $\log_{10} z$ would leave too much room for strong variations of LF_{IR} at early and late times, respectively. More quantitatively, we discretise the problem in bins regular in $\delta \log_{10} L_{\text{IR}} = 0.1$ and in $\delta \log_{10}(1+z) = 0.015$ which correspond to the sampling which is good enough to produce counts with regular flux sampling of $\delta \log_{10} S = 0.1$.

2.2. Regularizing the inverse problem

In practice, provided the number of bins in LF_{IR} is large enough, this problem is so-called “ill-posed”: there is possibly a large number of LFs which are able to satisfy Eq. (1) perfectly, hence overfitting the noisy counts. However, many of these solutions are unlikely and not physical so that we need to “regularize” the problem to obtain valid solutions. The first natural constraint is the positivity of the LF_{IR} (there are no such things as negative numbers of galaxies). This imposes an iterative, CPU-costly approach to the problem, and a choice for an initial guess (see below). Moreover, we want to avoid solutions which are not meaningful given our noisy finite set of counts, such as LFs which are chaotically varying as a function of L_{IR} or redshift. Therefore, we penalize the inversion with an extra term, added to the formal χ^2 , which enforces the smoothness of the LF_{IR} both in L_{IR} and in z (see Appendix A and Ocvirk et al. 2006b, for the details of the formalism). With these constraints, the solutions, \mathbf{X} , (which depend on the choice of the initial guess required for the non linear optimization), are reasonable and can serve as a solid basis for future works. We can also optionally impose external constraints as supplementary priors, namely the low-redshift luminosity functions obtained from direct methods.

To obtain the range of all realistic solutions for the non linear optimisation problem, we explore a wide range of random initial guesses, in a Monte-Carlo approach with at least 100 realizations. The range of LFs spanned by the initial guesses is much wider than the range of the final LF_{IR} (\mathbf{X}) obtained after convergence, which brings confidence in the exhaustivity of our study⁶.

Finally, some of the solutions do not match the constraints brought by CIRB measurements. We filter out these invalid solutions, a posteriori, leaving us only with the most realistic luminosity functions.

⁶ We could also have used a more classical approach to characterize the uncertainties in the recovered LFs by computing the posterior variance covariance of the parameters away from the iterative non linear solution, and compared it to the corresponding initial prior (hence constructing the so called information matrix). These uncertainties naturally arise from the uncertainties on the observed counts through the error matrix \mathbf{W} . Instead, we favored here Monte-Carlo simulations because they yield similar – if not more robust (since we span ranges of possible non linear solutions) – constraints on the recovered LF.

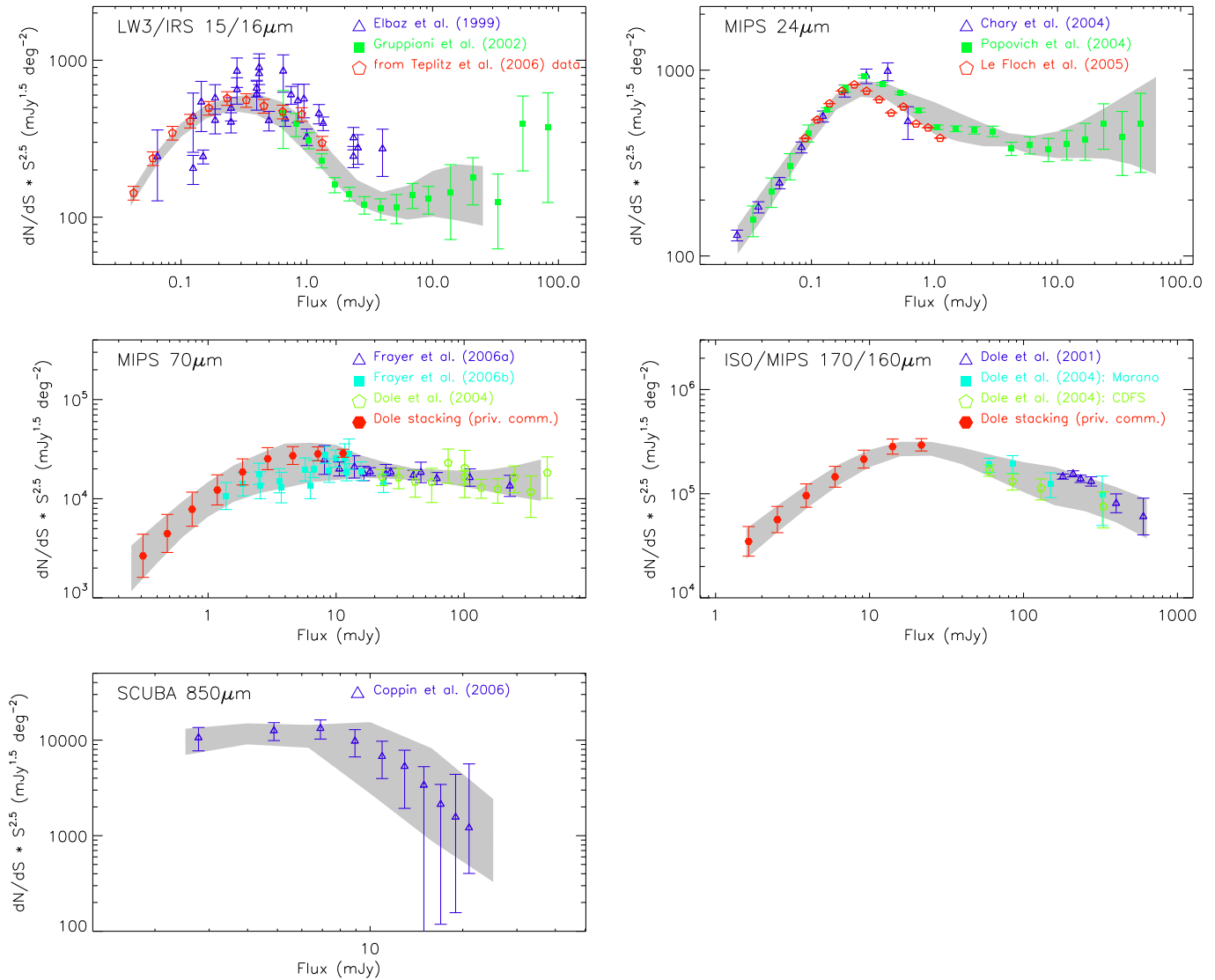


Fig. 1. Observed 15/16 μm , 24 μm , 70 μm , 160 μm and 850 μm counts of galaxies from various surveys. The shaded area representing 1 σ uncertainty area are determined semi-automatically from the data points, and are used as an input for the inversions. Instruments/fields: ISO LW3/various fields (Elbaz et al. 1999), ISO LW3/ELAIS-S (Gruppioni et al. 2002), SPITZER IRS/GOODS (Teplitz et al. 2006), SPITZER MIPS24/GOODS (Chary et al. 2004), SPITZER MIPS24/various fields (Papovich et al. 2004), SPITZER MIPS24/GOODS (Le Floch et al. 2005), SPITZER MIPS70/FLS (Frayser et al. 2006a), SPITZER MIPS70/GOODS-N (Frayser et al. 2006b), ISO ISOPHOT170/FIRBACK (Dole et al. 2001), SPITZER MIPS160/MARANO+CDFS (Dole et al. 2004), JCMT SCUBA/SXDF+LH (Coppin et al. 2006).

3. Data and SEDs used in this work

3.1. Input multi-wavelength counts

The multi-wavelength counts that we invert in this work are presented in Figure 1. They summarize bibliographic observed galaxy counts at 15, 24, 70, 160 and 850 μm . This compilation is not exhaustive: we retained the most significant surveys for each IR band, mixing wide and shallow ones to avoid as much as possible cosmic variance effects, and deep ones for faint source detections. The data shown in Figure 1 are actual observations, except for the 70 and 160 μm points from H. Dole (private communication, and also Dole et al. 2006) which are obtained from stacking 24 μm sources in several flux bins and using a MIR-FIR observed correlation. Although these points are not strict measurements, the MID-FIR relationship is tight enough (down

to less than 0.1 mJy) to bring a good confidence to the stacking results. We group the 15 and 16 μm counts as well as the 160/170 μm counts, thus neglecting the small differences to the counts (a few percent) that are caused by the slightly different k-corrections.

In the following, we use black lines for the observed counts Y , and shaded areas (the envelope that we define semi-automatically from the data) as 1 σ area defining the error matrix W^7 . Our inversion is applied to this compilation.

⁷ The shaded areas are defined by smoothed envelopes of the data points after excluding the strongest outliers, particularly at 15 μm .

3.2. Library of SEDs

The IR SEDs that we use in this study are taken from the empirical library of CE01, which defines a bijection between L_{IR} and the IR SED from 3 to 1000 μm . Although this library is based on correlation observed in local galaxies, we suppose in the following that the SEDs of galaxies with a given L_{IR} do not change with redshift. It does not necessarily mean that SEDs of individual galaxies do not evolve, but that they must evolve along the local SED- L_{IR} correlation. It is worth noting that when a description of the evolving IR SEDs of galaxies becomes available (e.g. with Herschel), the technique that we use can be applied to these evolving SED libraries.

Moreover, we ‘clip’ this library for the highest IR luminosities, using the $L_{\text{IR}}=10^{12.2} L_{\odot}$ SED shape for galaxies more luminous than this value. This makes the SEDs colder than in CE01 for ULIRGs and makes it compatible with most of the known data, from low-redshift low-luminosities to high-redshift luminous galaxies (see CE01, (see CE01, Papovich et al. 2007). Fig. 2 presents the relation between 24 μm and total IR luminosities which is predicted by the ‘‘clipped’’ CE01 library together with observations from (Papovich et al. 2007) in the range $z = 1.5 - 2.5$. This clipping can be justified by the fact that the SEDs of high luminosity galaxies (ULIRGS) like those seen at high redshift are poorly known in the local universe: their dust temperature will only be measured with Herschel. Therefore, the CE01 SEDs are extrapolated in this luminosity range. We chose to clip the IR dust temperatures of the CE01 library to those of the luminosity range really observed in the local universe, rather than extrapolating them.

4. Results

In this section, we present the counts, luminosity functions and star-formation history that are modeled from the counts inversion, as well as the effect of using or not using low- z luminosity functions as priors. We will compare these results and their redshift decompositions to measurements obtained from direct methods and bibliographic data only in Section 5.

4.1. Counts inversion

This inversion model has been designed to reproduce infrared galaxy counts and to derive as a result a range of possible total IR LF as a function of redshift, that can be converted afterwards into a range of cosmic star-formation histories. The success of the model can be visually tested by comparing the range of predicted galaxy counts with the observed number counts and their dispersion (see Fig.3).

At first glance, one can see that the observed counts are well-fitted over the whole IR range, from 15 to 850 μm . In particular, the bumps at 15 and 24 μm are reproduced simultaneously. The 850 μm differential counts are well-fitted too: negative k -corrections make it possible to see a high-redshift population of galaxies, namely ULIRGS and HLIRGS ($L_{\text{IR}} > 10^{11} L_{\odot}$) at $z > 2$, which are not seen at other wavelengths except in faint 24 μm counts.

Interestingly, one can see from Fig.3 that while the only strong constraint that is imposed on the model is to keep a smooth dependence of the LF with redshift and luminosity, the model is unable to perfectly fit the observed number counts and their dispersion at all flux densities and wavelengths even though the whole range of possible LF and associated redshift evolution has been spanned blindly. Some solutions tend not

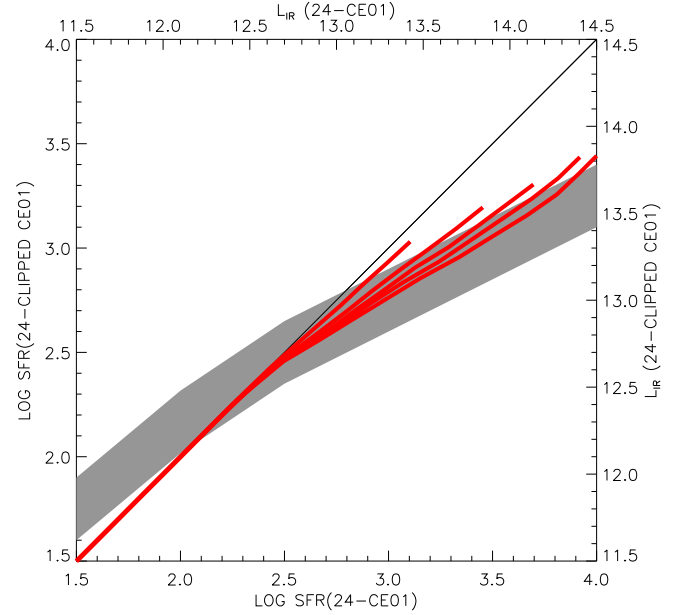


Fig. 2. 24 μm vs total IR luminosities (or the SFR equivalent of these luminosities assuming a Salpeter IMF). The shaded grey area represents the observations of Papovich et al. (2007) Fig. 11, considering that most of this intense SF is probed by the IR light, neglecting the UV contribution. The solid red lines correspond to the ‘‘clipped’’ CE01 library for a set of virtual galaxies at various redshifts from $z=1.5$ to 2.5, and fluxes fainter than 1 mJy, for which the Papovich 07 observations are valid. A pure CE01 library would have followed the one-to-one slope.

to fit perfectly the 15 μm counts, the 70 μm counts are slightly over-produced and more strikingly, the 160 μm counts are under-produced around 20 mJy.

An important strength of this model is to provide an objective and statistically significant way to test a given library of template SED. Indeed, the discrepancy between the model and observed counts cannot arise from the LF itself since it was allowed to vary both with luminosity and redshift with a large degree of freedom (see also Ocvirk et al. 2006a, for a discussion on the corresponding biases in a slightly different context). Hence it must arise from the library of template SEDs that is used as an input to fit the number counts (through the ‘‘k+d’’ matrix \mathbf{M}). The CE01 library of template SEDs that is used here reflects the median trend of local galaxies and was found to be statistically consistent with the radio-infrared correlation up to $z \sim 1.3$ (Elbaz et al. 1999; Appleton et al. 2004), with the mid-infrared observations of galaxies up to $z \sim 1$ with moderate variations (Marcellac et al. 2006) and with massive galaxies selected with the BzK technique (Daddi et al. 2007b). The origin of the discrepancy can therefore come from three possible origins. The first two possibilities compatible with no evolution of the infrared SED of galaxies are: (i) a bias towards cold galaxies due to the shallow depth at 160 μm within the dispersion already existing at $z \sim 0$, (ii) the existence of a sub-population of cold galaxies, already present locally but not yet identified due to limited constraints on both sides of the peak emission in the far infrared. A third possibility would be that the infrared SED of galaxies evolve as a function of redshift (see e.g. Chapman et al. 2002).

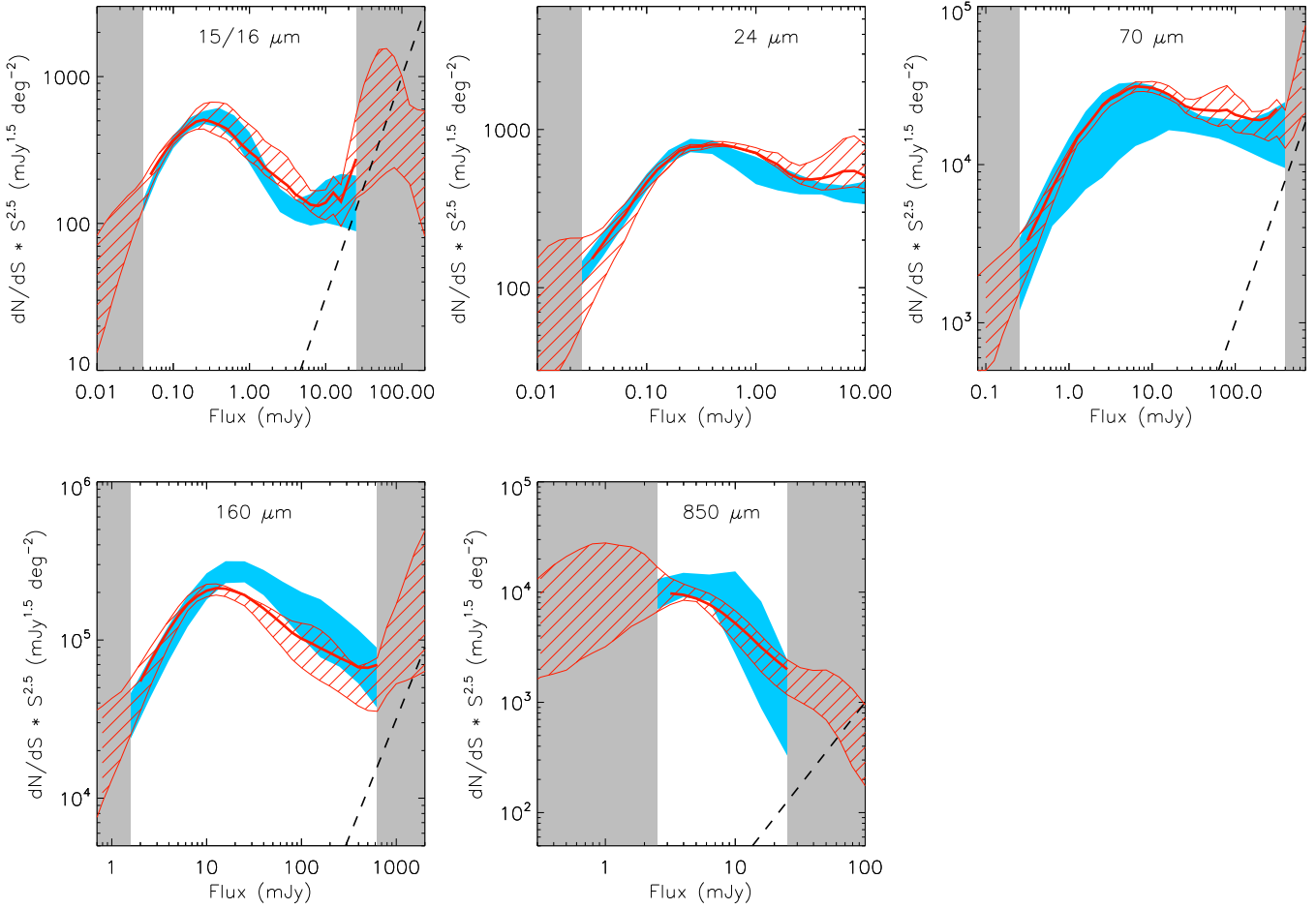


Fig. 3. Mid- and Far-IR counts obtained from the non-parametric inversion of the observed counts. The data counts which are the basis of the inversion are represented by the shaded blue zones (fitted values $\pm 1\sigma$, corresponding to the zones of Fig. 1). The best fit to the counts is shown by the solid red lines together with the range of allowed solutions (red dashed areas). The vertical grey zones delimit the flux ranges where some counts are observed. All the counts modeled here satisfy the CIRB constraints. The oblique dashed line corresponds to a statistical limit of a one square degree survey (less than 2 sources per decade in flux).

It is not possible to disentangle between the three possibilities based on the present dataset. However, a forthcoming paper will study this issue in detail using a stacking analysis at $160\mu\text{m}$ (Magnelli et al., in preparation). It must be noted though that the method described here is versatile enough to allow its user to test any library of template SED against existing constraints from galaxy counts and the infrared background. It will therefore be straightforward to check whether any change or evolution of the SEDs can reproduce the number counts at all wavelengths and flux densities. We refrained from making such adjustments to the counts at this stage since any of the previously mentioned alternatives is equally possible.

4.2. Solutions: Range of evolving luminosity functions

Looking now at the main output of the model, i.e. the evolution of the total IR luminosity function with redshift, we note that large parts of the LF are very-well constrained by the inversion (see Fig.4). In particular, the number density of galaxies with $10.5 < \log_{10} L_{\text{IR}} < 11.5$ at $z < 0.5$ is tightly constrained, as well as the numbers of galaxies with higher luminosities at larger redshift.

We will present in Section 5.2 a comparison of these solutions to the LF_{IR} s obtained from direct measurements at low redshift.

But before doing so, we note that a fraction of the solutions presents a knee in the LF, particularly at $0.3 < z < 1$ around $10^{10} - 10^{11} L_{\odot}$ which is responsible for the bump seen in the number counts at 24 and $15\mu\text{m}$ at the corresponding flux densities. However, not all solutions of the inversion technique present such a strong knee, which might be seen as an artifact.

4.3. Evolution of the star-formation activity

The SFRD can now be estimated from the LFs which were obtained from the counts inversion. The total infrared LFs are integrated on the whole range of luminosities down to $10^7 L_{\odot}$. The resulting total infrared luminosity density is then converted into a star-formation rate density using formula 2 (Kennicutt 1998).

$$\text{SFR} [M_{\odot} \text{ yr}^{-1}] = 1.72 \times 10^{-10} L_{\text{IR}} [L_{\odot}] \quad (2)$$

Therefore, the regions shown in Figure 5 effectively represent the range of *all* possible star-formation histories which are compatible with the multi- λ counts and the CIRB. The SFRD

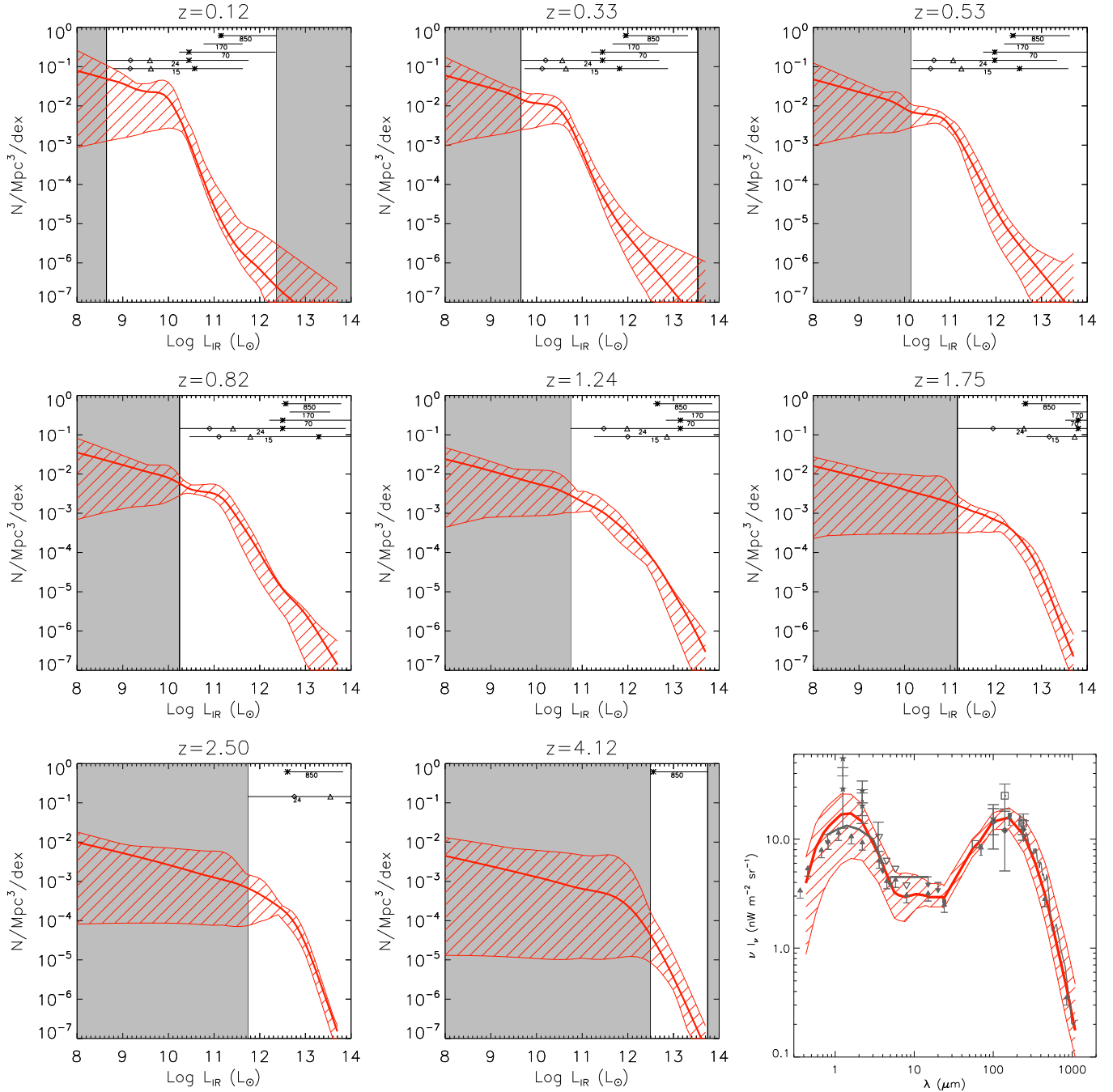


Fig. 4. All possible solutions for the evolving LFs which reproduce best all the IR counts of Fig. 3 and the CIRB constraints. As in Fig. 3, the thick red line and the dashed red areas represent the best-fitting solution and the range of allowed solutions, respectively. By construction, no conclusion on the LF can be made in the vertical grey-shaded areas where a divergence is expected because these objects are not seen in the counts due to flux limits of current IR surveys. At the top of each panel, the ranges of L_{IR} probed by IR counts are shown as horizontal lines, from 15 to 850 μm (bottom to top). Diamonds, triangles and star symbols correspond to 0.1, 0.3 and 3 mJy fluxes respectively. Bottom right panel: range of CIRB corresponding to the inverted LFs. Data points (in grey) are taken from the compilation by Dole et al. (2006).

history obtained from the LF_{IR} which produces the best fit to the counts is also shown for each luminosity class of galaxies.

This inversion shows that, indeed, an IR downsizing is at work: “normal” galaxies dominate the SFRD at low redshift (although the contribution of ULIRGS and HLIRGS are poorly constrained in the low- z range because they would correspond to bright and very rare sources, not easily seen in the counts of

current deep surveys). At $z > 0.8$, LIRGS dominate the SFRD, whereas the contribution of ULIRGS peaks at $z = 2$ or further.

These results will be compared in details to measurements from direct methods and bibliographic data in Section 5.3.

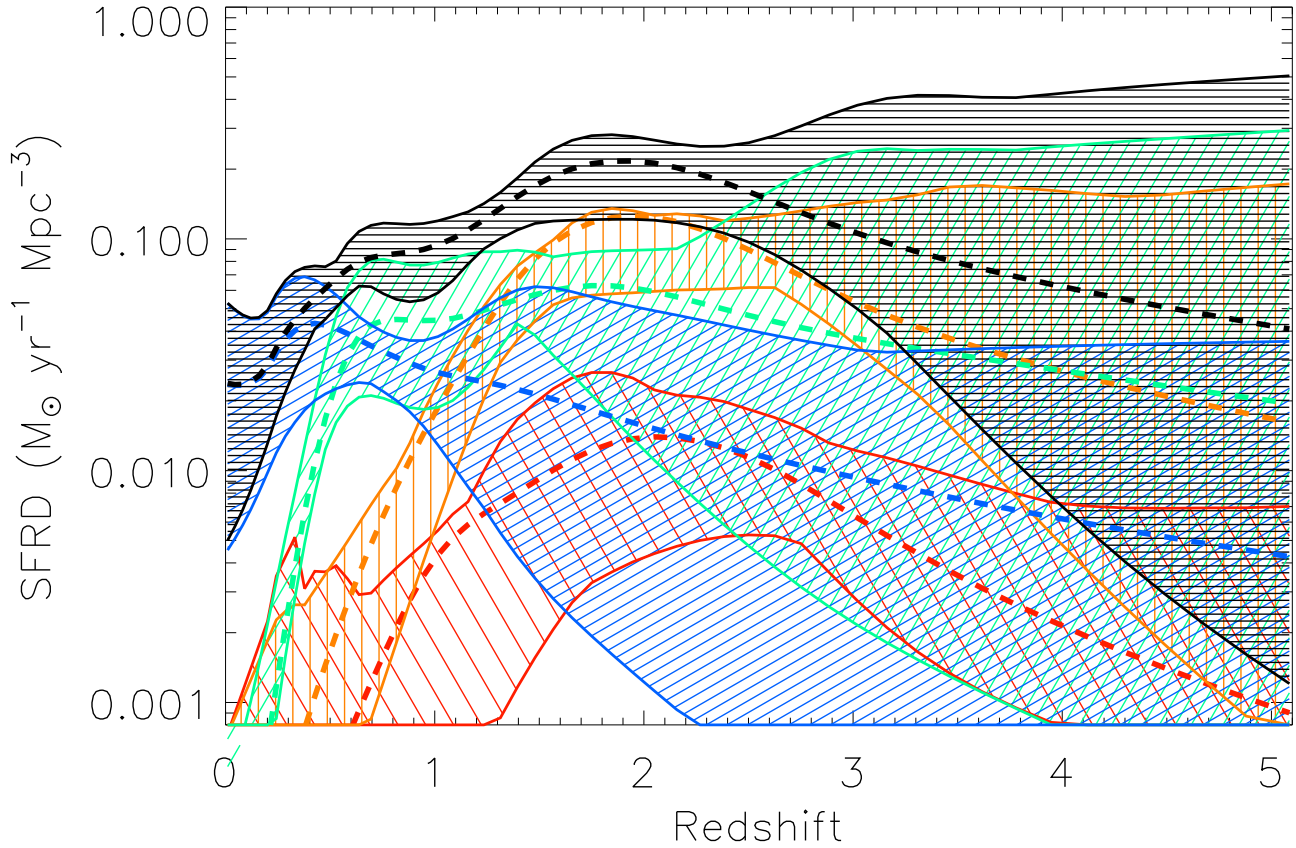


Fig. 5. Star-formation rate density since $z = 5$ derived from the counts inversions. SFRD is obtained from the range of all possible luminosity functions derived from the counts and respecting the CIRB constraints (All galaxies=black; normal star-forming galaxies=blue; LIRGS=green; ULIRGS=orange; HLIRGS=red).

4.4. Using the low-redshift luminosity function as a prior

Although the spirit of this work is to find all possible solutions matching both the available IR counts and the CIRB constraints, which are both model-independent observations, it is also possible to use an additional prior for the inversion.

As mentioned in the introduction, The $15\ \mu\text{m}$ LFs can be measured directly up to $z \approx 1$ with the “direct” method from $24\ \mu\text{m}$ galaxy samples with known or estimated redshifts (e.g. Le Floc’h et al. 2005). Alternatively, the $8\ \mu\text{m}$ LF can be measured if $z \approx 2$ galaxies are targeted (Caputi et al. 2007). In both cases, these mid-IR LFs can be tentatively converted into total IR LFs, again using libraries of SEDs for the extrapolation.

Although subject to many caveats, such direct measurements of the LF below $z = 2$ can be used as a prior to guide the inversion, and at least constrain the solutions at low-redshift. Technically, this supplementary prior involves penalizing again the formal χ^2 by adding an extra term which measures the distance between the observed LF and the solution (this corresponds to $\mu \neq 0$ in Appendix A). The LFs which are too different from the known low-redshift LF are therefore strongly penalized, and excluded *de facto*.

We present in Fig. 6 the effect of using the prior on low-redshift LF (measured with the “direct” method from $24\ \mu\text{m}$ data at $z < 2$, see also Section 5.2) on the derived cosmic SFRD. When compared to Fig. 5, one can see that the trends are not

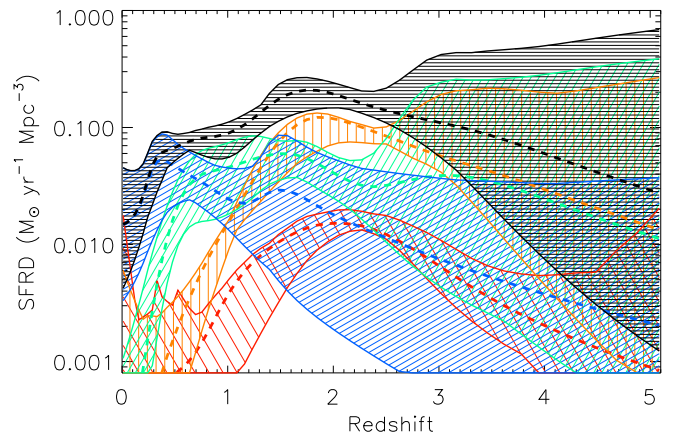


Fig. 6. Same as Fig. 5 top panel, but this time the low-redshift ($z < 2$) LF is used as a prior in the inversion.

changed much, but we note that some uncertainties in the LIRGS and ULIRGS contributions are slightly tightened. It is particularly the case at $z \approx 2.5$ where the ULIRGS stand out from the lower-luminosity galaxies and dominate clearly the SFRD.

We also note that the SFRD evolution in the case with priors presents large “waves” in the evolution which might be artifacts due to the additional low-redshift constraints imposed on the χ^2 . The model has, in this case, less freedom for a smooth evolution of the star-formation history, which is therefore penalized.

However, one can be surprised that adding this low-redshift information as an additional input does not significantly alter the trends in the derived evolution and decomposition of the SFRD. We interpret this as follows: the leverage that we have access to by inverting galaxy counts on a very wide wavelength-basis (from 15 to 850 μm) is large enough to provide a realistic description of the redshift distribution of the sources on a statistical basis. This is likely only possible because the IR SEDs of galaxies that we use in our modeling is probably close enough to the real SEDs of galaxies, on average (again, in the statistical sense) at any redshift lower than $z \simeq 3$. At least, the average differences between real and model SEDs seem small enough, at first order, to avoid a complete blurring of the de-projection of multi-wavelength galaxy counts onto the luminosity function space. Therefore, various populations of galaxies at different redshifts are seen at various wavelengths, which reduces considerably degeneracies and enables us to recover the history of IR galaxies as a whole.

Since the philosophy of this paper is to remain as conservative as possible, we choose not to use the low-redshift LF measured from direct methods as a prior in the following. Indeed, doing so would only slightly change our results, and it would introduce a source of potential additional errors propagating from the errors intrinsic to direct methods (k-corrections in the mid-infrared or redshifts).

5. Validation: comparison with direct measurements at low redshift

After presenting the global outputs of the model in the previous section, we detail here the redshift decomposition of the inversion results and we compare them to measurements obtained from direct (redshift-based) methods. This comparison is particularly challenging since no redshift information was used as an input in the inversion.

5.1. Redshift decomposition of the mid-IR counts

To validate our inversion results, we compare the redshift decomposition of the IR counts to observations from a direct method.

To do so, we compare our results to data from the GOODS survey (P.I. Dickinson for GOODS-Spitzer, P.I. M. Giavalisco for GOODS-HST) originally presented in Giavalisco et al. (2004). This survey consists in two fields which have been subject to several studies at various wavelengths in the past few years. Here, we investigate the redshift decomposition of the counts at 16, 24 and 70 μm using the optical counterparts of these sources in GOODS and making use of the spectroscopic and photometric redshifts. The sample that we use covers a total area of 0.07 square degree on the sky. Although this area is quite small and cosmic variance might affect our study, we find that the luminosity functions measured from the direct method are similar in both GOODS fields, making them compatible within 2σ . The spectroscopic completeness is high (60% at $S_{24\mu\text{m}} = 30\mu\text{Jy}$ for $z < 1.5$ sources) and we complement them with photometric redshifts computed with the code Z-Peg (Le Borgne & Rocca-Volmerange 2002) with a precision

$\Delta z/(1+z) \simeq 0.04$ to 0.1 depending on the redshift of the sources. We then use the Vmax formalism to correct from incompleteness at the lower flux limit. The galaxies showing signs of AGNs (identified from X-rays or optical emission lines), were excluded from the sample of 24 μm sources. Doing so enables us to use SEDs of galaxies to compute k-corrections and affects only slightly our results, mainly at the very high-luminosity end of the luminosity function at moderate ($z = 1$) or high ($z > 2$) redshifts.

Figure 7 presents the comparison of the redshift decomposition of the counts obtained from direct and inverse methods. At 24 μm , our best solution for the recovered IR LF indeed produces a redshift decomposition of the counts which is compatible with the observed ones. The match of 15 μm counts as a function of redshifts is poorer because CE01 templates represent less well the fluxes at this wavelength for $0.5 < z < 1$ galaxies (e.g. Marcillac et al. 2006). As for the 70 μm counts, the observed decomposition is not complete at faint fluxes, making the comparison hazardous.

It is worth noting, despite the small disagreements between the modeled and the observed counts decompositions (which can actually be due both to the model or to incompleteness in the observations), that the overall redshift decomposition of the model seems in fairly good agreement with results from a direct method which uses the redshift of the sources as a primary information to derive their L_{IR} . Moreover, the bump of the 24 μm counts is confirmed to be due to a large majority of LIRGs at $0.5 < z < 1.5$.

5.2. Comparison to direct measurements of the infrared luminosity functions

We now compare the range of luminosity functions LF_{IR} obtained from our inversion to some measurements of the LF_{IR} obtained from the direct method.

As noted before, several studies (Le Flocc’h et al. 2005; Babbedge et al. 2006; Caputi et al. 2007) have measured the 15 or 8 μm luminosity functions, which can be converted to LF_{IR} if a library of SEDs is assumed. We show in Fig.8 the results from (Le Flocc’h et al. 2005) for reference.

We also provide our own direct measurements of the evolving LF_{IR} that we derive from 24 μm galaxies seen in the GOODS fields (North+South). We choose to do these direct measurements again for two reasons. First, for consistency with our inversion, we use the same library of templates for the k-corrections (used for MIR to total LIR conversion)⁸. Secondly, our data at 24 μm reaches a depth of 24 μJy instead of 80 μJy in previous works, extending the LF to the faint-end. The completeness at this depth is 85% (Chary 2007). Not surprisingly, our direct measurements of the LF_{IR} from 24 μm fluxes are compatible with previous studies that used the same method. In particular, we find the same values as Le Flocc’h et al. (2005) who explored the $z < 1$ domain. However, we reach higher redshift galaxies thanks to the depth of our sample. However, k-corrections are very uncertain for these high- z sources (24 μm corresponds to less than 8 μm at $z > 2$, a range where the library of SEDs is not validated). Therefore, we use these high-redshift measurements with caution, as mentioned earlier in Section 4.4.

⁸ Note that Le Flocc’h et al. (2005) errors bars are rather large because they reflect partly the uncertainties in the SEDs of galaxies. We checked that using another library of SEDs (e.g. the LDP library) produces differences in our LFs comparable to the error bars of Le Flocc’h et al. (2005).

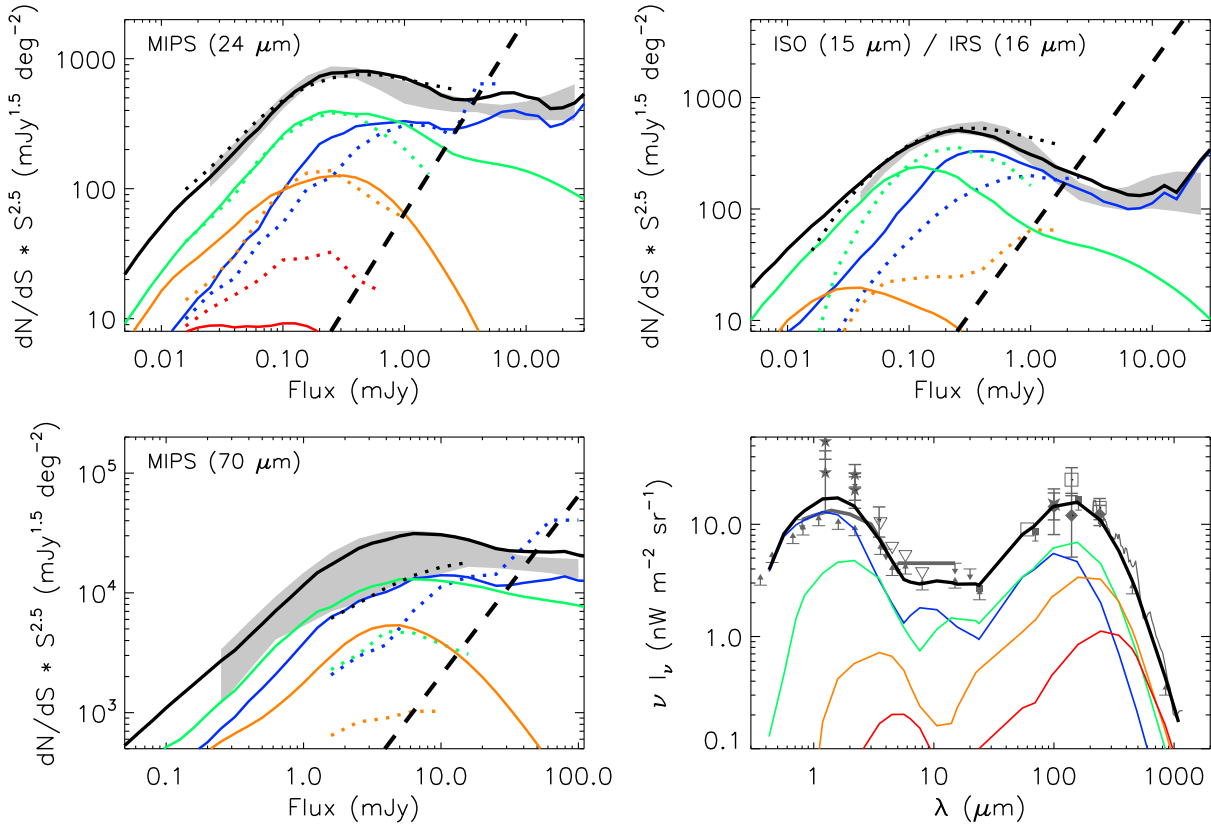


Fig. 7. *Top and bottom left:* Counts at 16, 24 and 70 μm modeled (solid lines) from the inversion on the one hand, and observed (dotted lines) in GOODS fields on the other hand. The counts are decomposed in redshift bins (blue= $z < 0.5$, green= $0.5 < z < 1.5$, orange= $1.5 < z < 2.5$, red= $z > 2.5$). *Bottom right:* CIRB decomposed in redshift (same color-coding). The oblique dashed line corresponds to the limit in statistics due to the smallness of a field like GOODS North+South or 0.07 square degrees: less than 2 galaxies per flux bin of width $\delta \log F = 0.1$ dex are expected below this limit.

It is striking in Fig.8 that the LF obtained from the direct method is consistent with the best-fitting LF derived from the counts inversion (dashed line in Fig.8) in the common range that they probe. This is remarkable because no information on the redshift of the sources was used in the inversion. This means that all the constraints that one can get from these direct measurements are not really needed for the inversion: although we do not use the redshift of the sources, we recover the observed redshift distributions which are here expressed equivalently in terms of evolving luminosity functions. The interpretation is the same as for the redshift decomposition of the counts, which are a different views of the same phenomenon.

The meaningfulness of the agreement between the observed and the recovered LFs is strengthened by the fact that that both L_{IR} luminosity functions are measured or estimated using the same library of SEDs, thus using the same k-correction in a consistent way. Using another library of SEDs for both methods would produce the same kind of agreement, although the precise shape of the LFs would be slightly different from what we obtain here with the “clipped” CE01 library.

5.3. Cosmic star-formation history vs literature

In this section, we compare the SFRD history that we derived from the multi- λ counts inversion to “direct” measurements at low redshift.

5.3.1. Total SFRD

The comparison of the total SFRD derived with this inversion technique matches well the compilation of direct measurements from Hopkins & Beacom (2006) (Fig.9).

Moreover, we also show in Fig.9 the SFRD that we derive from 24 μm data in the GOODS fields (triangles). We must stress here that these measurements, obtained with the “direct” method, are independent from the SFRD inferred by the counts inversion⁹. We only present them here for comparison to the inversion results in this subsection. The total infrared luminosities measured for individual 24 μm sources in the GOODS fields were summed up in redshift bins and converted to SFRDs. Like several authors before Flores et al. (e.g. 1999); Le Floc’h et al. (e.g. 2005); Pérez-González et al. (e.g. 2008), we could have extrapolated the measured luminosity functions in the faint-end to obtain total SFRD. But this is somewhat dangerous and depends strongly on the parameterization of the LF fits. So we choose not to extrapolate the luminosity functions at faint fluxes to estimate the SFRD. Instead, we use only the sources brighter than our flux limit at 24 μm (24 μJy) to estimate lower-limits for the SFRD at every redshift. Therefore, all the points in this figure should be considered as lower limits.

Our inversion technique, on the other hand, makes it possible to partially avoid such caveats: first, unlike direct methods, more

⁹ The datasets are independent, indeed. But strictly speaking, it is actually not the case for the SFRD measurements because the libraries of SEDs used for k-corrections are the same in both methods.

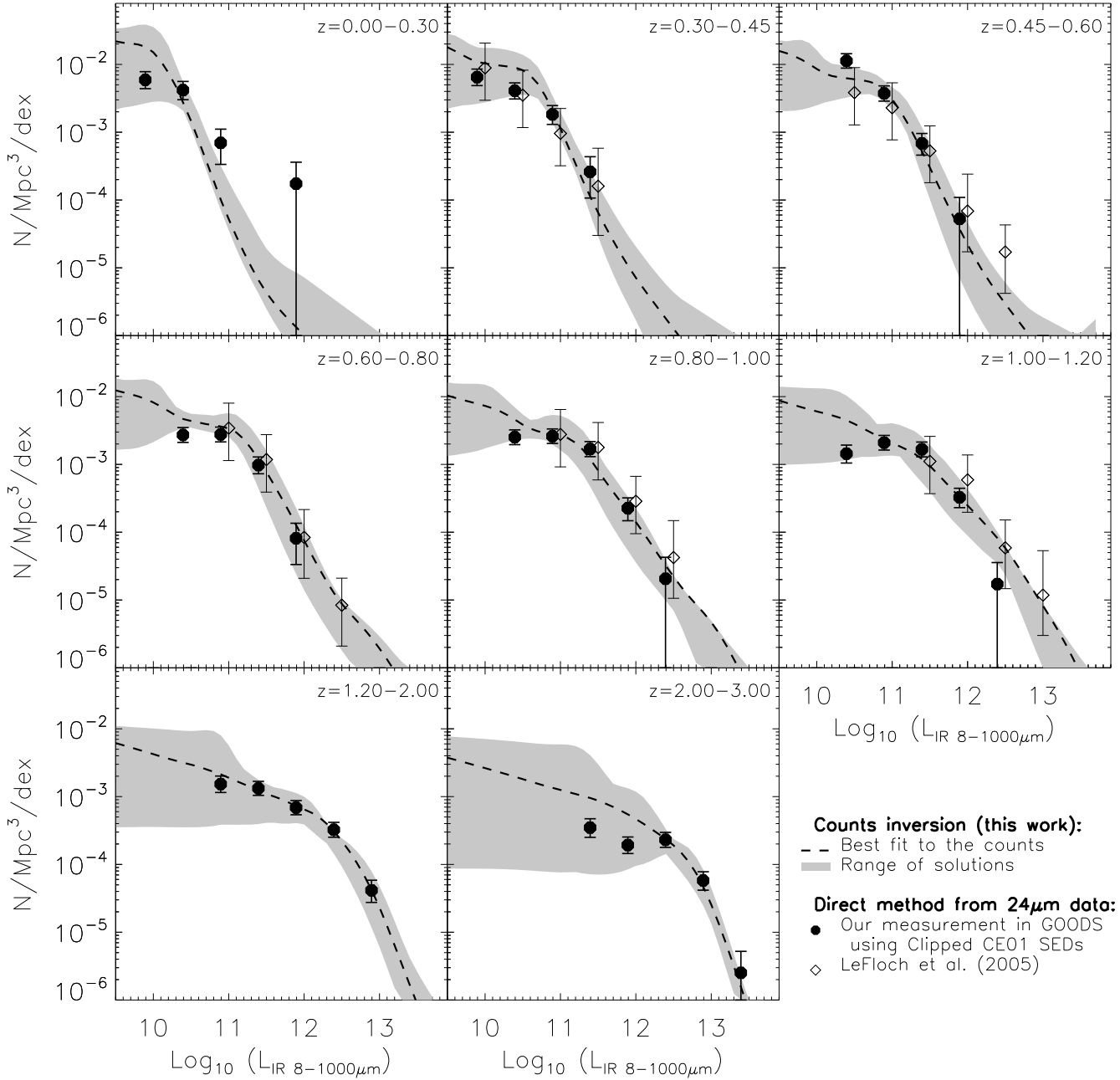


Fig. 8. Total IR luminosity functions derived independently from the counts inversion and from direct measurements. “Clipped” CE01 templates are used for the $24\ \mu\text{m}$ fluxes to L_{IR} conversion (filled black dots). The measurements from Le Floch et al. (2005) are also shown for reference. The model curves shown are given at the mean redshift of each bin.

than one band is used to estimate the total IR LF, and secondly, the extrapolation of the LF in the faint-end is achieved automatically via the only constraint of having a smooth variation in L_{IR} and z . Therefore, the area of uncertainties we propose here are likely more robust than previous estimates because they use more data and are less dependent of parameterization for both the shape of the LF and its evolution.

The SFRD obtained from the counts inversion and our measurements with the “direct” method in GOODS are in rather good agreement, which tends to give credit to the inversion. One might note, however, that the data points are systematically lower than the inversion results, which illustrates the choice of

not extrapolating the measured LFs at faint luminosities to estimate the SFRD.

5.3.2. Luminosity decomposition of the SFRD

Figure 10 now presents a detailed comparison of the history of star-formation rate density (SFRD) inferred from our inversion and decomposed in luminosity classes, to what can be independently obtained from the “direct” method with $24\ \mu\text{m}$ sources in GOODS.

Let us first consider the reliability of the direct measurements used for comparison (triangles in Fig. 10). Because we chose not

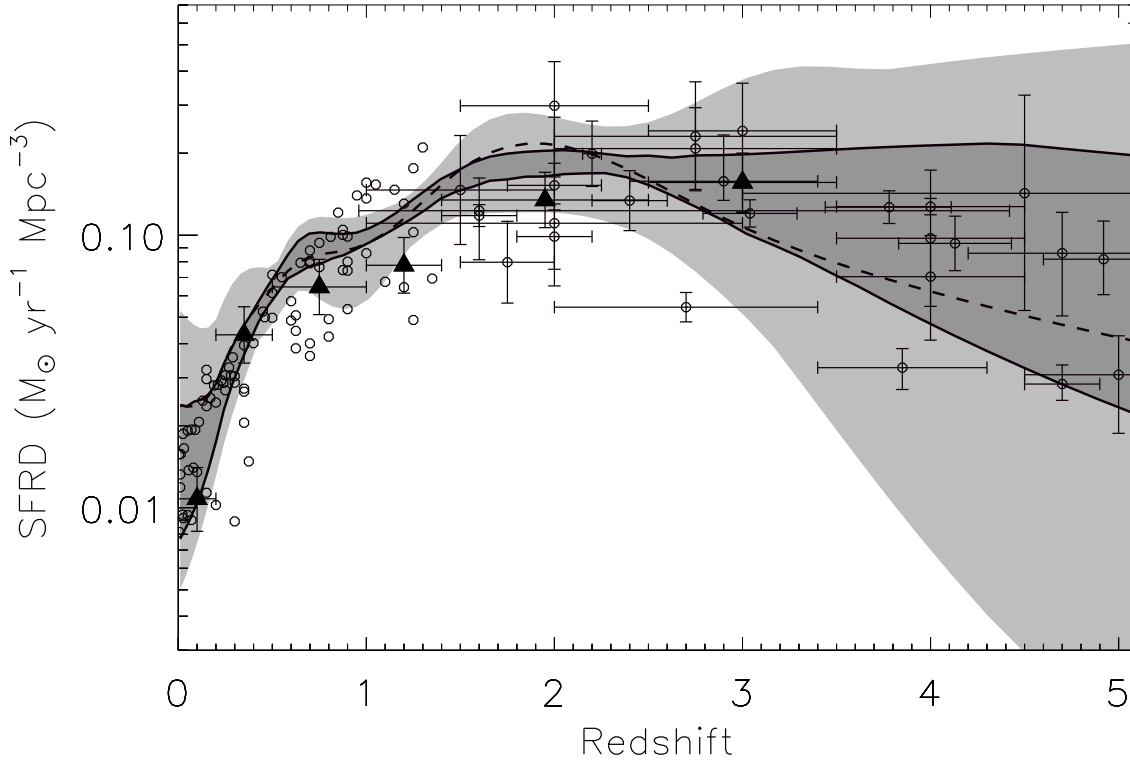


Fig. 9. Total SFRD regions compared to the compilation of direct measurements from Hopkins & Beacom (2006) (empty circles and error bars only for $z > 1.5$ for clarity purposes). The outer light-grey regions corresponds to all possible LFs fitting the counts. The inner darker region includes 68% of these models. The dashed line corresponds to the LF producing the best-fit to the multi- λ IR counts. + MESURES

to extrapolate the LFs at low luminosity, several points in this figure must be considered as lower limits. It is not the case, however, for the $z < 1.2$ points for LIRGS and the $1 < z < 2.5$ points for ULIRGS. Overall, we are limited at very low redshift by small statistics and at high redshift by flux limits. Moreover, the contribution of HLIRGS should be taken with caution. Indeed, by inspecting these luminous high-redshift sources, we came to the conclusion that a large fraction of the photometric redshifts computed for these IR-bright sources had a poor precision, leading to catastrophic failures for almost half of the HLIRG sources at $z > 1.5$. This poor performance of the photometric redshifts is not too surprising for this class of galaxies at such high redshifts since the templates used in the fitting procedure have a relatively low level of dust, compatible with most galaxies seen in the current optical and NIR surveys. These direct measurements presents a nice picture of the “IR downsizing”: the cosmic SFRD was dominated by brighter and brighter galaxies in the IR as we go back in time. Our results confirms the IR view of the cosmic star-formation history which was explored in previous works up to $z = 2$ Caputi et al. (e.g. 2007). At $z = 2$, we confirm that ULIRGS seem to dominate the budget of the star-formation activity.

A number of interesting remarks arise from the comparison of the “inverted” SFRD to the “direct” measurements.

First, it is comforting to see that both methods give consistent views of the IR downsizing. In both cases, low luminosity galaxies dominate the SFRD at $z < 0.5$ and ULIRGS are dominant at $z > 2$. However, a more detailed comparison of both re-

sults provides interesting clues on what is really seen in current deep surveys. One can easily notice that most data points (“direct” measurements) are on the lower limit of the area allowed by the inversion. This means that the $24\mu\text{Jy}$ limited sample of $24\mu\text{m}$ galaxies probe almost all the cosmic star-formation density. However, the same remark also opens up the possibility that up to 50% of the SFRD is not yet resolved in sources down to our flux limit, especially for low-luminosity galaxies at $z > 0.5$.

Another interesting point is that the inversion does not allow the population of HLIRGS to contribute much to the CIRB at *any* redshift. This is somewhat in contradiction with the direct measurements for the same objects which tend to indicate an increasing contribution of these extreme sources at $z > 2$. But again, we must stress that many uncertainties lie in the observations of these distant sources (photometric redshifts, validity of the SEDs, contribution of AGNs, etc.). Therefore, we must conclude that this population cannot be too numerous to reproduce the deep IR counts, including the $850\mu\text{m}$ ones, if the “clipped” CE01 SEDs are used at any redshift. We checked that allowing more HLIRGS at these redshifts, at a level comparable to the observed number, over-produces the $850\mu\text{m}$ counts. This means that either these objects do not exist (and indeed, as we mentioned before, about half of these HLIRGS have a wrong photometric redshift, hence a wrong luminosity), or the SEDs for these objects are strongly different from the templates in the SED library that we use. Of course, both reasons may be at work simultaneously.

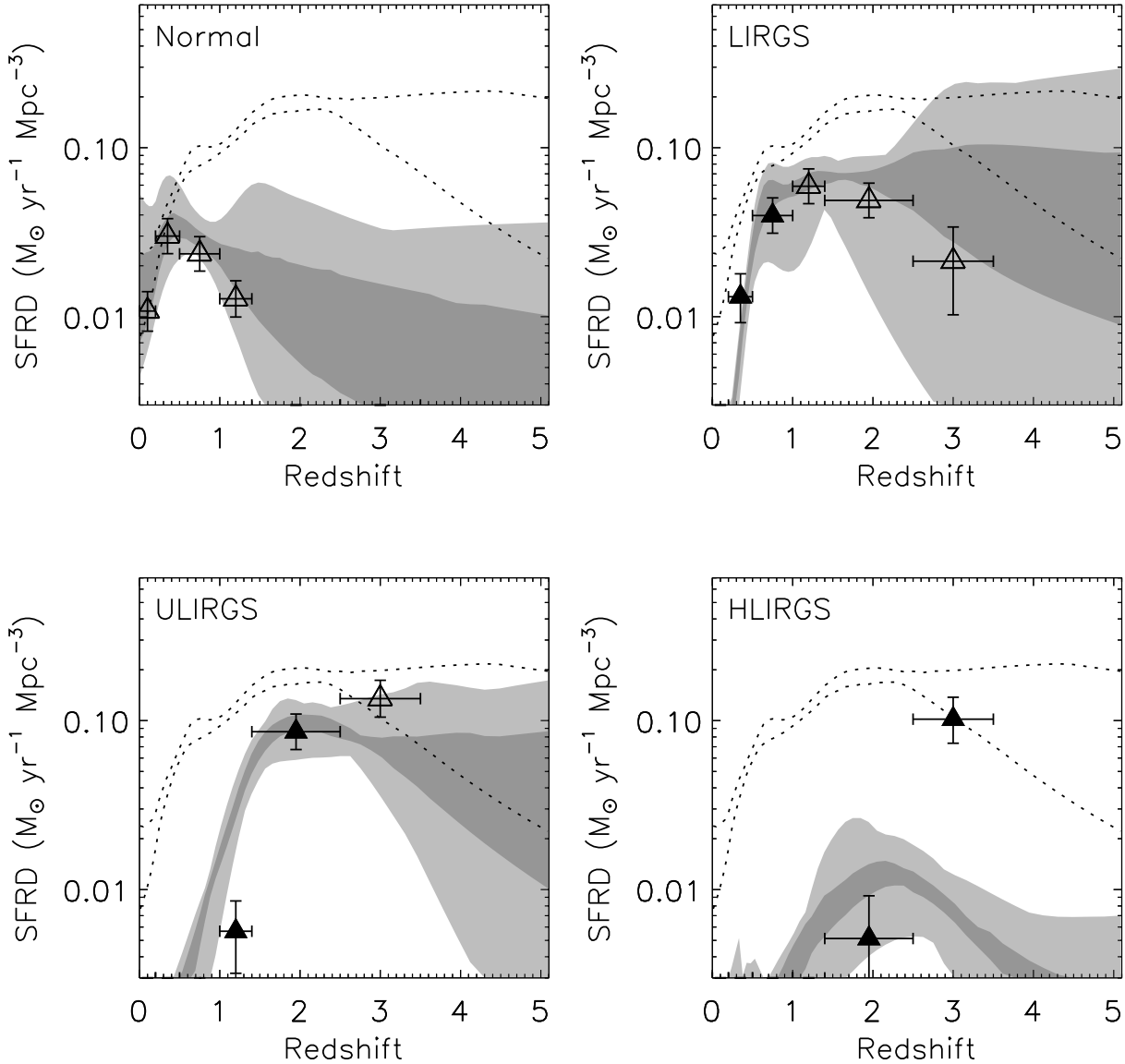


Fig. 10. History of the star-formation rate density decomposed in four infrared luminosity classes. The inversion results (full set of models and 68% inner region) are shown with grey-shaded areas. The total SFRD history (68% inner region) is also shown for reference in each panel as dotted lines. Direct (and independent) measurements from the GOODS survey are shown as triangles. Empty triangles are used for bins affected by completeness. The $z = 3$ point for HLIIRGS is subject to caveats (see text for details) and probably overestimated.

Finally, we notice that the measured SFRD for ULIRGS at $z < 1.5$ (orange points in Fig. 5) is much smaller than the range allowed by the inversion. This probably illustrates the cosmic variance due to the small area covered by our GOODS sample.

5.4. Evolution of the stellar mass density

In this section, we wish to address the question of the consistency of the star formation rate history that we derive from the inversion model with the independent observational constraints existing on its integral, namely the evolution of the comoving density of stars per unit comoving volume. Modulo the choice of an initial mass function (IMF) and the computation of the mass of stellar remnants after the death of massive stars, it is

straightforward to compute the total amount of stars that must be locked into galaxies as a function of redshift, on the basis of the star formation rate history. In our computation of stellar masses, we account for the recycling of stellar material into the ISM, for the mass of stellar remnants (which account for about 15% of the total stellar mass at $z = 0$) and for the evolution of the metallicity, using the spectral synthesis code PÉGASE.2 (Fioc & Rocca-Volmerange 1997, 1999).

This is not the first time that such computation is performed but we believe that this is an important test which has been the source of discussions in the recent past, in particular with the claim that both histories - star formation and stellar masses - were not consistent, with the integral of the star formation rate

history producing more stars than actually observed at any redshift. We disprove here this previous claim.

Before discussing our own computation, we wish to emphasize an important point regarding the effect of the choice of a particular IMF in this process. Although various IMFs have been proposed in the past, including top-heavy IMFs for starbursting galaxies (see e.g. Elbaz et al. 1995, 1992; Rieke et al. 1993; Lacey et al. 2008; Davé 2008), no definitive evidence has yet been provided for a non-universality of the IMF. The main difference that is now commonly accepted with respect to the pioneering work of Salpeter (1955) is the finding that the slope of the IMF changes around $1 M_{\odot}$, in the direction of having a lower contribution of low mass stars to the total mass of stars formed, or equivalently a larger contribution of stars more massive than $1 M_{\odot}$ (see the review by Chabrier (2003)). Nonetheless, we wish to emphasize here that the effect of a change in the IMF such as this one affects almost equivalently the conversion factor that is used to determine the SFR from a given infrared luminosity than the mass-to-light ratio that is used to derive the stellar mass of a galaxy. In the present study, the SFR is derived from the total IR luminosity assuming the coefficient computed for a Salpeter IMF by Kennicutt (1998, see Eq. 2). For a different IMF, such as the Baldry & Glazebrook (2003, hereafter BG03) one which shows a flattening below $1 M_{\odot}$ as discussed above, the SFR would be 0.45 lower and the M/L ratio would also be reduced by a similar factor (0.6, computed using the PEGASE.2 code).

The evolution of the cosmic stellar mass density with redshift that we computed by integrating the SFR history resulting from the inversion model is found to be in good agreement with the latest direct measurements of galaxy masses of e.g. Pérez-González et al. (2008). Note that their published stellar mass densities were multiplied by a factor 0.61 since they were estimated with a Salpeter (1955) IMF, which corresponds to the difference in mass-to-light ratios in the K band. It appears clearly that at all redshifts probed, the range of star formation histories that result from the inversion technique are consistent with the measured stellar mass density. This consistency indirectly reinforces the likelihood that the inversion technique does span a reasonable range of possible histories.

Finally, we note that after submission of the present paper, an erratum was published by Hopkins & Beacom (2006) in which they recognize that their computation was erroneous and that contrary to their initial claim, the two histories do not exhibit any inconsistency, apart possibly at the largest redshifts. Hence their study is now consistent with our finding, which is not surprising since our SFR history globally agrees with their compilation (see Fig. 9).

6. Discussion and Conclusions

This paper presents measurements of the evolving infrared luminosity function and of the corresponding cosmic star-formation rate density using a non-parametric inversion of the galaxy counts in the mid and far infrared.

For the first time, we derived *exhaustively* the *range* of possible evolutions for these quantities with a non-parametric inversion technique. The input data that were used simultaneously to derive these set of allowed models cover a wide range of wavelengths: deep infrared counts observed at various wavelengths (from 15 to $850 \mu\text{m}$), the cosmic infrared background measurements, and optionally the low-redshift measurements of the IR luminosity function which are derived from the $24 \mu\text{m}$ fluxes. We derive from this inversion the allowed range of star-formation

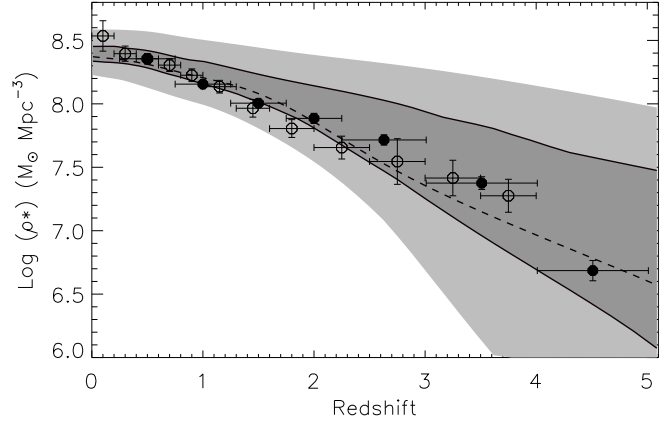


Fig. 11. Range of allowed evolutions of the stellar mass density computed with the range of cosmic star formation histories of Fig. 5. The dashed lines corresponds to the best-fit to the IR counts. The data points with error bars are measurements from Pérez-González et al. (2008) (empty circles) and Elsner et al. (2008) (filled dots). The realistic Baldry & Glazebrook (2003) IMF is used both for the data points and to derive the stellar mass density from the SFR density.

histories, together with the range of stellar mass density evolutions that are consistent considering all this multi- λ data. This approach is to be contrasted with previous modeling works that were based on predictions from a single preferred model: a *range* of models is given here.

The inversion technique does not use any redshift information as an input, although such an option can be (and has been) considered through a prior constructed on the low-redshift LF. Despite this arguably questionable lack of information about the redshift of the sources, the inversion technique recovers surprisingly well the known redshift distributions up to $z = 2$. The reason for this success probably lies in the very wide basis of wavelengths used in the inversion: $15 \mu\text{m}$, $160 \mu\text{m}$ and $850 \mu\text{m}$ (and intermediate wavelengths) do not probe the same populations of galaxies at the same redshifts because of very different k-corrections. The uncertainties inherent to the library of SEDs that we used seem to be masked, at first order, by the extent of the data set that we considered.

We find new constraints for the SFRD and its decomposition. Our method shows that the IR downsizing must be at work, even though *only* the IR counts are considered. Quantitatively, we are in good agreement with direct measurements of the SFRD at low and high redshift. Again the clear advantage of our approach is its exhaustivity: the range of possible star-formation histories inferred from the inversion does not suffer from incompleteness, in contrast with surveys based on spectroscopic and photometric redshifts. This range matches very well recent measurements of the evolution of the stellar mass density, when a non-evolving IMF is used and stellar remnants are taken into account, in contrast with previous works.

Then by comparing the results on the SFRD from the “direct” (redshift-based) and “indirect” (counts inversion) methods, we showed that the population of HLRGS tentatively seen at $z > 2$ is excluded, at least with SEDs similar to local ULIRGS. Either the photometric of these peculiar sources are systematically wrong, or their SED is very different from the local equiv-

alents. Both reasons contribute probably to the observed discrepancy.

Moreover, a strong contribution from obscured AGNs to the mid-IR counts, especially at $24\mu\text{m}$ as shown by Daddi et al. (2007a) cannot be excluded. For this reason, the objects that seem to be HLIRGS at $z = 2 - 3$ may also be actually obscured AGNs. Solid identifications of AGNs from far-IR diagnostics will be needed for further modeling works.

The set of galaxy SEDs that we used in the inversion (CE01) was calibrated at $z = 0$ for $\lambda < 100\mu\text{m}$. Moreover, the SFR predictions made with these templates are compatible with radio estimates up to $z = 1$ (Elbaz et al. 2002; Appleton et al. 2004). Although the multi- λ IR counts are reasonably well reproduced with the inverted luminosity functions, the $160\mu\text{m}$ counts cannot be satisfactorily reproduced by *any* star-formation history satisfying the rest of the counts: at this wavelength, the counts are systematically under-produced by models. As noted by LDP03, a population of objects colder than those included in the CE01 library is needed to produce these counts. We can therefore conclude either on an evolution of the SEDs which were different – presumably colder for the same L_{IR} – at high redshift, or on a poor calibration of the CE01 SEDs in this range (which is actually expected). This strongly confirms the tentative evidence from previous works on modeling (LDP03) or observational Papovich et al. (2007) grounds. The recent works of Pope et al. (2008) on sub-millimeter galaxies go in the same direction: these high-redshift IR galaxies are colder than previously thought. But only Herschel will enable the characterization of the dust temperature of these objects at these wavelengths. In fact, Herschel studies of local galaxies will, for that matter, be very helpful to high-redshift studies of galaxy evolution.

Moreover, the inversion does not completely take into account the special case of AGNs. Implicitly, we assumed that their SEDs are close enough to the templates of star-forming galaxies represented in the CE01 library. Obviously, the AGNs have different SEDs, with a flatter SED in the mid and far-IR. However, our results are not strongly sensitive to this issue. Firstly, the contribution of AGNs (as identified from X-rays or optical spectra) to the mid-IR counts is small, especially for faint fluxes. Therefore, a small correction to the bibliographic counts should be made, but remains difficult at all wavelengths. Moreover, as noted above, the global trends derived for the LF or the cosmic SFRD compare well with independent measurements at low redshift, which seems to indicate that the inversion is relatively little sensitive to the precise shape of the SEDs. Of course, there are limits to this statement, but we believe that the small fraction of AGNs found in the counts, combined to this statement should only weakly affect our findings.

After checking that the predicted redshift distributions of the sources making the counts at 16 , 24 and $70\mu\text{m}$ are compatible with the real redshift distributions, we made predictions for the future surveys to come with Herschel, SPICA, SCUBA2, and Artemis (see Appendix C where we detail the bivariate distributions in z and L_{IR} of the sources as a function of flux, and we give the fraction of the CIRB that will be resolved by future confusion limited surveys).

Finally, we stress that although the LF_{IR} and the star-formation history derived from the inversion actually depend slightly on the library of SEDs chosen for the work, the use of a new, updated, SED library would be straightforward: unlike previous modeling approaches, it would not imply a whole new work to refine parameters in order to obtain a good modeling of the counts.

Acknowledgements. We wish to thank A. Hopkins for making available his compilation of cosmic star-formation rates. We also thank Hervé Dole for providing unpublished results from stacking at 70 and $160\mu\text{m}$. We are grateful to E. Daddi, R. Chary, H. Dole, G. Lagache, B. Magnelli, K. Glazebrook and I. Baldry for fruitful discussions. D. Le Borgne and D. Elbaz wish to thank the Centre National d'Etudes Spatiales for his support. D. Elbaz thanks the Spitzer Science Center at the Caltech university for support. We would also like to thank D. Munro for freely distributing his Yorick programming language (available at <http://yorick.sourceforge.net/>) which was used during the course of this work. We also thank E. Thiebaud for his optimisation package *optimpack* (Thiebaud 2005).

References

- Appleton, P. N., Fadda, D. T., Marleau, F. R., et al. 2004, *ApJS*, 154, 147
 Babbidge, T. S. R., Rowan-Robinson, M., Vaccari, M., et al. 2006, *MNRAS*, 370, 1159
 Baldry, I. K. & Glazebrook, K. 2003, *ApJ*, 593, 258
 Caputi, K. I., Lagache, G., Yan, L., et al. 2007, *ApJ*, 660, 97
 Chabrier, G. 2003, *PASP*, 115, 763
 Chapman, S. C., Smail, I., Ivison, R. J., et al. 2002, *ApJ*, 573, 66
 Chary, R., Casertano, S., Dickinson, M. E., et al. 2004, *ApJS*, 154, 80
 Chary, R. & Elbaz, D. 2001, *ApJ*, 556, 562
 Chary, R.-R. 2007, in *Astronomical Society of the Pacific Conference Series*, Vol. 380, *Deepest Astronomical Surveys*, ed. J. Afonso, H. C. Ferguson, B. Mobasher, & R. Norris, 375–+
 Coppin, K., Chapin, E. L., Mortier, A. M. J., et al. 2006, *MNRAS*, 372, 1621
 Daddi, E., Alexander, D. M., Dickinson, M., et al. 2007a, *ApJ*, 670, 173
 Daddi, E., Dickinson, M., Morrison, G., et al. 2007b, *ApJ*, 670, 156
 Davé, R. 2008, *MNRAS*, 385, 147
 Dole, H., Gispert, R., Lagache, G., et al. 2001, *A&A*, 372, 364
 Dole, H., Lagache, G., & Puget, J.-L. 2003, *ApJ*, 585, 617
 Dole, H., Lagache, G., Puget, J.-L., et al. 2006, *A&A*, 451, 417
 Dole, H., Le Floc'h, E., Pérez-González, P. G., et al. 2004, *ApJS*, 154, 87
 Elbaz, D., Arnaud, M., Casse, M., et al. 1992, *A&A*, 265, L29
 Elbaz, D., Arnaud, M., & Vangioni-Flam, E. 1995, *A&A*, 303, 345
 Elbaz, D., Cesarsky, C. J., Chanial, P., et al. 2002, *A&A*, 384, 848
 Elbaz, D., Cesarsky, C. J., Fadda, D., et al. 1999, *A&A*, 351, L37
 Elsner, F., Feulner, G., & Hopp, U. 2008, *A&A*, 477, 503
 Fioc, M. & Rocca-Volmerange, B. 1997, *A&A*, 326, 950
 Fioc, M. & Rocca-Volmerange, B. 1999, *ArXiv Astrophysics e-prints*
 Flores, H., Hammer, F., Thuan, T. X., et al. 1999, *ApJ*, 517, 148
 Franceschini, A., Aussel, H., Cesarsky, C. J., Elbaz, D., & Fadda, D. 2001, *A&A*, 378, 1
 Frayer, D. T., Fadda, D., Yan, L., et al. 2006a, *AJ*, 131, 250
 Frayer, D. T., Huynh, M. T., Chary, R., et al. 2006b, *ApJ*, 647, L9
 Giavalisco, M., Ferguson, H. C., Koekemoer, A. M., et al. 2004, *ApJ*, 600, L93
 Gruppioni, C., Lari, C., Pozzi, F., et al. 2002, *MNRAS*, 335, 831
 Hopkins, A. M. & Beacom, J. F. 2006, *ApJ*, 651, 142
 Juneau, S., Glazebrook, K., Crampton, D., et al. 2005, *ApJ*, 619, L135
 Kennicutt, Jr., R. C. 1998, *ARA&A*, 36, 189
 Lacey, C. G., Baugh, C. M., Frenk, C. S., et al. 2008, *MNRAS*, 385, 1155
 Lagache, G., Dole, H., & Puget, J.-L. 2003, *MNRAS*, 338, 555
 Le Borgne, D. & Rocca-Volmerange, B. 2002, *A&A*, 386, 446
 Le Floc'h, E., Papovich, C., Dole, H., Villar, V., et al. 2005, *ApJ*, 632, 169
 Lilly, S. J., Le Fevre, O., Hammer, F., & Crampton, D. 1996, *ApJ*, 460, L1+
 Madau, P., Ferguson, H. C., Dickinson, M. E., et al. 1996, *MNRAS*, 283, 1388
 Marcillac, D., Elbaz, D., Chary, R. R., et al. 2006, *A&A*, 451, 57
 Ocvirk, P., Pichon, C., Lançon, A., & Thiébaud, E. 2006a, *MNRAS*, 365, 74
 Ocvirk, P., Pichon, C., Lançon, A., & Thiébaud, E. 2006b, *MNRAS*, 365, 46
 Papovich, C., Dole, H., Egami, E., et al. 2004, *ApJS*, 154, 70
 Papovich, C., Rudnick, G., Le Floc'h, E., et al. 2007, *ApJ*, 668, 45
 Pérez-González, P. G., Rieke, G. H., Villar, V., et al. 2008, *ApJ*, 675, 234
 Pichon, C., Siebert, A., & Bienaymé, O. 2002, *MNRAS*, 329, 181
 Pope, A., Chary, R.-R., Alexander, D. M., et al. 2008, *ApJ*, 675, 1171
 Rieke, G. H., Loken, K., Rieke, M. J., & Tamblyn, P. 1993, *ApJ*, 412, 99
 Salpeter, E. E. 1955, *ApJ*, 121, 161
 Steidel, C. C., Adelberger, K. L., Giavalisco, M., Dickinson, M., & Pettini, M. 1999, *ApJ*, 519, 1
 Teplitz, H. I., Chary, R., Colbert, J. W., et al. 2006, in *Bulletin of the American Astronomical Society*, Vol. 38, *Bulletin of the American Astronomical Society*, 1079–+
 Thiébaud, E. 2005, in *NATO ASIB Proc. 198: Optics in astrophysics*, ed. R. Foy & F. C. Foy, 397–+
 Xu, C. 2000, *ApJ*, 541, 134

Appendix A: The inverse problem

A.1. The Model

As argued in the main text, (Section 2.1) the formal equation relating the number of counts of galaxies $N(\lambda_i, S_k)$ with the flux S_k (within dS) at wavelength λ_i (within $d\lambda$) to the number of counts of galaxies, $N(z, L_{\text{IR}})$, at redshift z (within dz) and IR luminosity L_{IR} (within dL_{IR}) is given by

$$N(\lambda_i, S_k) = \iint \delta_{\text{D}}[S_k - F(\lambda_i, z, L_{\text{IR}})] N(z, L_{\text{IR}}) dz dL_{\text{IR}}, \quad (\text{A.1})$$

where δ_{D} is the standard Dirac function, F is the flux observed in a photometric band centered on wavelength λ_i of a galaxy at redshift z with a L_{IR} luminosity:

$$F(\lambda_i, z, L_{\text{IR}}) = A/D_L^2(z)K(\lambda_i, z, L_{\text{IR}}), \quad (\text{A.2})$$

where $D_L(z)$ is the luminosity distance for an object at redshift z with the standard cosmology used in this paper, A is the solid angle corresponding to one square degree, and K corresponds to the k -corrections:

$$K(\lambda_i, z, L_{\text{IR}}) = 1/R \int_{\lambda_i^{\text{min}}}^{\lambda_i^{\text{max}}} \frac{L_{\text{IR}}(\lambda/(1+z))}{1+z} T_i(\lambda) d\lambda, \quad (\text{A.3})$$

where $T_i(\lambda)$ is the transmission curve for the filter centered on λ_i , $R = \int_{\lambda_i^{\text{min}}}^{\lambda_i^{\text{max}}} T_i(\lambda) d\lambda$ and $L_{\text{IR}}(\lambda)$ is the underlying library of SEDs (CE01) for which the SED of a galaxy depends only on its total luminosity L_{IR} .

As mentioned in the main text, from the point of view of the conditioning of the inverse problem, it is preferable to reformulate Eq. (A.1) in terms of $\mathcal{Z} \equiv \log_{10}(1+z)$, $\mathcal{S} \equiv \log_{10}(S)$ and $m_{\text{IR}} \equiv \log_{10} L_{\text{IR}}$:

$$\hat{N}(\lambda_i, S_k) = \iint H(S_k, \lambda_i, \mathcal{Z}, m_{\text{IR}}) \tilde{N}(\mathcal{Z}, m_{\text{IR}}) d\mathcal{Z} dm_{\text{IR}}, \quad (\text{A.4})$$

where the kernel of Eq. (A.4) reads

$$H(S, \lambda, \mathcal{Z}, m_{\text{IR}}) \equiv 10^{2.5S + \mathcal{Z} + m_{\text{IR}}} \delta_{\text{D}}[S - F(\lambda, 10^{\mathcal{Z}}, 10^{m_{\text{IR}}})]$$

with

$$\tilde{N}(\mathcal{Z}, m_{\text{IR}}) \equiv N(10^{\mathcal{Z}}, 10^{m_{\text{IR}}}), \quad (\text{A.5})$$

$$\hat{N}(\lambda_i, S_k) \equiv N(\lambda_i, 10^{S_k}) 10^{2.5S_k}. \quad (\text{A.6})$$

Here we introduced the euclidian number count, \hat{N} , by multiplying the number count by the expected $S^{2.5}$ power law.

A.2. Discretization

Let us project $\tilde{N}(\mathcal{Z}, m_{\text{IR}})$ onto a complete basis of $p \times q$ functions

$$\{e_k(\mathcal{Z})e_l(m_{\text{IR}})\}_{j=1, \dots, p \quad l=1, \dots, q},$$

of finite (asymptotically zero) support, which are chosen here to be piecewise constant step functions:

$$\tilde{N}(\mathcal{Z}, m_{\text{IR}}) = \sum_{j=1}^p \sum_{l=1}^q n_{jl} e_j(\mathcal{Z})e_l(m_{\text{IR}}), \quad (\text{A.7})$$

The parameters to fit are the weights n_{jl} . Calling $\mathbf{X} = \{n_{jl}\}_{j=1, \dots, p, l=1, \dots, q}$ (the $p \times q$ parameters) and

$\mathbf{Y} = \{\hat{N}(\lambda_i, S_k)\}_{i=1, \dots, r, k=1, \dots, s}$ (the $r \times s$ measurements), Eq. (A.4) then becomes formally

$$\mathbf{Y} = \mathbf{M} \cdot \mathbf{X}, \quad (\text{A.8})$$

where \mathbf{M} is a $(r, s) \times (p, q)$ matrix with entries given by

$$M_{ikjl} = \left\{ \iint e_j(\mathcal{Z})e_l(m_{\text{IR}})H(S_k, \lambda_i, \mathcal{Z}, m_{\text{IR}}) d\mathcal{Z} dm_{\text{IR}} \right\}_{ikjl}.$$

A.3. Penalties

Assuming that the noise in \hat{N} can be approximated to be Normal, we can estimate the error between the measured counts and the non-parametric model by

$$L(\mathbf{X}) \equiv \chi^2(\mathbf{X}) = (\mathbf{Y} - \mathbf{M} \cdot \mathbf{X})^\perp \cdot \mathbf{W} \cdot (\mathbf{Y} - \mathbf{M} \cdot \mathbf{X}), \quad (\text{A.9})$$

where the weight matrix \mathbf{W} is the inverse of the covariance matrix of the data (which is diagonal for uncorrelated noise with diagonal elements equal to one over the data variance). Since we are interested here in a non-parametric inversion, the decomposition in Eq. (A.7) typically involves many more parameters than constraints, such that each parameter controls the shape of the function, \tilde{N} , only locally. As mentioned in the main text, some trade-off must therefore be found between the level of smoothness imposed on the solution in order to deal with the artefacts induced by the ill-conditioning on the one hand, and the level of fluctuations consistent with the amount of information in the counts on the other hand: between two solutions yielding equivalent likelihood, the smoothest is chosen on the basis of the quadratic penalty:

$$R(\mathbf{X}) = \mathbf{X}^\perp \cdot \mathbf{K} \cdot \mathbf{X}, \quad (\text{A.10})$$

where \mathbf{K} is a positive definite matrix, which is chosen so that R in Eq. (A.10) should be non-zero when \mathbf{X} is strongly varying as a function of its indices. In practice, we use a square Laplacian penalisation Ocvirk et al. (D2 norm as defined by Eq. 30 of 2006b). Indeed, a Tikhonov penalization does not explicitly enforce smoothness of the solution, and a square gradient penalization favors flat solutions which are unphysical in our problem.

As mentioned in the main text, for a range of redshifts, a direct measurement, \mathbf{X}_0 , which can be used as a prior for \tilde{N} , is available. Hence we may add as a supplementary constraint that

$$P(\mathbf{X}) = (\mathbf{X} - \mathbf{X}_0)^\perp \cdot \mathbf{W}_2 \cdot (\mathbf{X} - \mathbf{X}_0), \quad (\text{A.11})$$

should remain small, where the weight matrix, \mathbf{W}_2 , is the inverse of the covariance matrix of the prior, \mathbf{X}_0 , and should be non zero over the appropriate redshift range. In short, the penalized non-parametric solution of Eq. (A.8) accounting for both penalties is found by minimizing the so called objective function

$$Q(\mathbf{X}) = L(\mathbf{X}) + \lambda R(\mathbf{X}) + \mu P(\mathbf{X}), \quad (\text{A.12})$$

where $L(\mathbf{X})$, $R(\mathbf{X})$ and $P(\mathbf{X})$ are the likelihood and regularization terms given by Eqs. (A.9), (A.10) and (A.11), respectively. The Lagrange multipliers $\lambda, \mu \geq 0$ allow us to tune resp. the level of smoothness of the solution (in practice, we set $\lambda = 0.02$ for the reasons given below), and the requirement that \mathbf{X} should remain close to its prior for the range of redshifts for which data is available. The introduction of the Lagrange multipliers is formally justified by the fact that we want to minimize the objective function $Q(\mathbf{X})$, subject to the constraint that $L(\mathbf{X})$ and $P(\mathbf{X})$ should fall resp. in the range $N_{\text{data}} \pm \sqrt{2N_{\text{data}}}$ and $N_{\text{param}} \pm \sqrt{2N_{\text{param}}}$.

The minimum of the objective function, $Q(\mathbf{X})$, given by Eq. (A.12) reads formally:

$$\hat{\mathbf{X}} = (\mathbf{M}^\perp \cdot \mathbf{W} \cdot \mathbf{M} + \lambda \mathbf{K} + \mu \mathbf{W}_2)^{-1} \cdot (\mathbf{M}^\perp \cdot \mathbf{W} \cdot \mathbf{Y} + \mu \mathbf{W}_2 \cdot \mathbf{X}_0).$$

This equation clearly shows that when $\mu \rightarrow \infty$ the solution tends towards \mathbf{X}_0 , while the smoothing Lagrange multiplier, λ , damps counterparts of the components of \mathbf{Y} corresponding to the higher singular vectors of \mathbf{M} (Ocvirk et al. 2006b). When dealing with noisy datasets, the non-parametric inversion technique may produce negative coefficients for the reconstructed luminosity function. In order to avoid such effects, positivity is imposed on those coefficients n_{jl} in Eq. (A.7), see for instance Ocvirk et al. (2006b) or Pichon et al. (2002). In practice, the minimum of the objective function is found iteratively, using `optimpack` (Thiébaud 2005). The relative weight on the likelihood and the two penalties is chosen so that the three quantities have a comparable contribution to the total likelihood after convergence. This corresponds to a reasonably smooth variation of the LF both in redshift and L_{IR} , and imposes a solution which is always within 1σ of the observed low-redshift LF, \mathbf{X}_0 , when μ is not set to zero in Eq. (A.12).

Appendix B: Test of robustness

In order to quantify the confidence level of the inversion technique, we test its robustness. Starting from an arbitrary LF, we produce IR counts in the bands and flux ranges corresponding to the observations from this LF. Then, we add some random Gaussian noise to the simulated counts, using the real uncertainty on the observations as the σ of the error distribution for each flux bin. Finally, we apply the inversion technique described in Section 2.1 to these noisy counts and obtain an output LF.

The comparison of the input and output LFs is shown in Fig. B.1. The error on the absolute difference in $\log_{10} LF_{\text{in}} - \log_{10} LF_{\text{out}}$ is represented in grey levels and contours. The difference is generally smaller than 0.4 dex (factor 2.5) in the range where the LF can be constrained from the observed counts (range of the z - L plane encompassed by the dashed lines). A noticeable exception is the very low-redshift range ($z < 0.1$) which corresponds to bright sources. For such large fluxes, the considerable noise in the observed counts produces large errors on the recovered LF. At high redshift, recall that the ultra-luminous population of galaxies appears as rare and very bright objects, in a flux range where the number counts are poorly known.

Appendix C: Model predictions for Herschel

In Section 4, we have inverted the known IR counts to obtain constraints on the evolving total IR LF. We have seen that the LF obtained through this inversion is realistic and matches most of the recent observations (counts, CIRB, Mid-IR LF at low redshift). Then, in Section 5.2, we have shown how we can measure directly a part of this LF with a good confidence, and we have shown that the LF resulting from the inversion is in good agreement with this solid measurement, validating the LF obtained by this empirical modeling approach. In this section, we use the median LF obtained from the inversions to predict some counts which should be observed with future observations in the FIR with Herschel or SCUBA2.

At the time of publication, several new facilities are in preparation to observe the Universe in the far-IR to sub-mm regimes. The differential counts (normalized to euclidean) at wavelengths

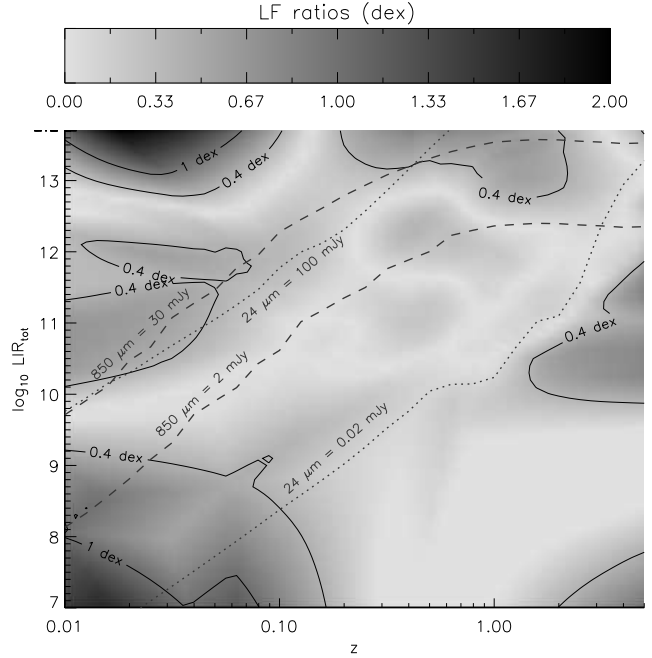


Fig. B.1. Estimated robustness of the LF inversion used in this paper. The relative difference between the input LF and the recovered LF (when a realistic noise is added to the corresponding input counts) is larger for darker parts of the diagram. This difference is relatively small (< 0.4 dex) in the region of the z - L space effectively constrained by observations: the dotted and dashed lines correspond to the extreme fluxes considered at $24\ \mu\text{m}$ and $850\ \mu\text{m}$, respectively. See main text for details.

ranging from 16 to $850\ \mu\text{m}$ which we derive from the inversion technique are presented in Fig. C.3. The separation of the contribution of local, intermediate and distant galaxies in different colors illustrates the expected trend that larger wavelengths are sensitive to larger redshifts, hence the relative complementarity of all IR wavelengths. There will be a bias towards more luminous and distant objects with increasing wavelength, illustrated here for the Herschel passbands (see Fig. C.4), but this may be used to pre-select the most distant candidates expected to be detected only at the largest wavelengths. In the following, we discuss the predictions of the inversion technique for those instruments as well as their respective confusion limits, which is the main limitation of far-IR extragalactic surveys.

The ESA satellite Herschel is scheduled to be launched within the next year, while the next generation IR astronomical satellite of the Japanese space agency, SPICA, is scheduled for 2010, with a contribution of ESA under discussion, including a mid-IR imager named SAFARI. Both telescopes share the same diameter of 3.5 meters, but the lower telescope temperature of SPICA, combined with projected competitive sensitivities, will make it possible to reach confusion around $70\ \mu\text{m}$ (where Herschel is limited by integration time). The 5σ -1hour limits of the instruments SAFARI onboard SPICA ($50\ \mu\text{Jy}$, 33 - $210\ \mu\text{m}$, dashed line), PACS (3mJy , 55 - $210\ \mu\text{m}$, light blue line) and SPIRE (2mJy , 200 - $670\ \mu\text{m}$, blue line) onboard Herschel are compared in Fig. C.1 to the confusion limits that we derive from the best-fit model of the inversion, at all wavelengths between 30 and $850\ \mu\text{m}$, assuming the the confusion limit definition given below.

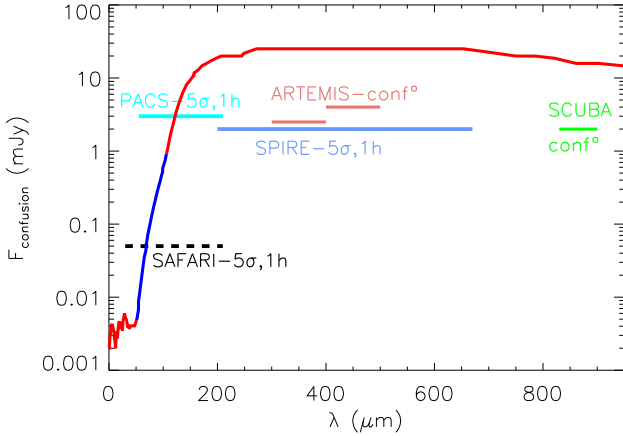


Fig. C.1. Confusion limit for a 3.5 meter telescope. The 5σ -1hour limits of SPICA-SAFARI ($50\mu\text{Jy}$, $33\text{-}210\mu\text{m}$, dashed line), Herschel PACS (3mJy , $55\text{-}210\mu\text{m}$, light blue line) and SPIRE (2mJy , $200\text{-}670\mu\text{m}$, blue line) are shown together with their wavelength ranges. The blue part of the curve is determined by the source density criterion (i.e. the requirement to have less than 30% of the sources closer than $0.8\times\text{FWHM}$), the red part is defined by the photometric criterion, i.e. sources must be brighter than 5 times the rms due to very faint sources below the detection limit.

The definition of the confusion limit is not trivial, in particular because it depends on the level of clustering of galaxies; the optimum way to define it would be to perform simulations to compute the photometric error as a function of flux density, and

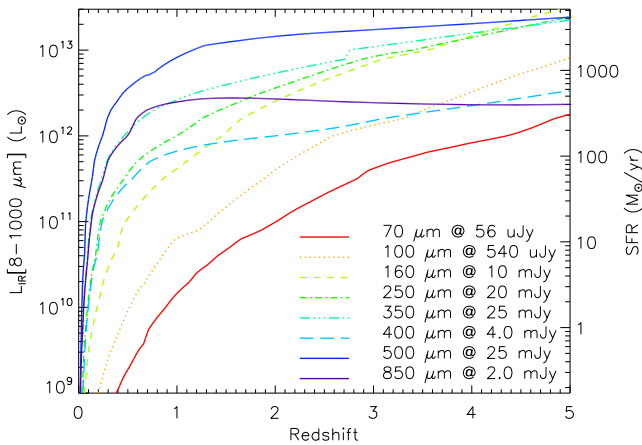


Fig. C.2. Detection limits for confusion limited surveys from 70 to $850\mu\text{m}$. The curves show the minimum IR luminosity ($8\text{-}1000\mu\text{m}$), or equivalently SFR ($=L_{\text{IR}} \times 1.72 \times 10^{-10}$), that can be detected for a star forming galaxy assuming that it has an SED similar to the Chary & Elbaz (2001) ones. The 70, 100, 160, 250, 350 and $500\mu\text{m}$ limits correspond to a 3.5 m telescope diameter, such as Herschel or SPICA, while the $400\mu\text{m}$ is for a 12 m class telescope such as APEX (e.g. ARTEMIS, we show the average between the two bands at 350 or $450\mu\text{m}$ to avoid confusion with Herschel) and the $850\mu\text{m}$ is for a 15 m telescope as the JCMT (SCUBA).

then decide that the confusion limit is e.g. the depth above which 68 % of the detected sources are measured with a photometric accuracy better than 20 %. In the following, we only consider a simpler approach which involves computing the two sources of confusion that were discussed in Dole et al. (2003):

- the photometric confusion noise: the noise produced by sources fainter than the detection threshold. The photometric criterion corresponds then the requirement that sources are detected with a $S/N(\text{photometric}) > 5$.
- the fraction of blended sources: a requirement for the quality of the catalog of sources will be that less than $N\%$ of the sources are closer than $0.8\times\text{FWHM}$, i.e. close enough to not be separated.

We have tested various levels for N and found that $N = 30\%$ was equivalent to the above requirement that 68 % of the detected sources are measured with a photometric accuracy better than 20 % using realistic simulations in the far IR for Herschel. Hence we will use here the value of $N = 30\%$. The confusion limit is then *defined* as the flux density above which both criteria are respected. As a result, it is found that the main limitation is the fraction of blended sources at $\lambda = 50\text{-}105\mu\text{m}$ (blue part of the curve in Fig. C.1) and the photometric confusion noise below and above this range, i.e. at $\lambda = 33\text{-}50$ and $\lambda = 105\text{-}210\mu\text{m}$ (red parts of curve in Fig. C.1). As a result of their smaller beam, shorter IR wavelength are more efficient at detecting faint star forming galaxies than longer ones (see Fig. C.2). This is at the expense of observing further away from the peak of the far IR emission, which implies larger uncertainties on the derivation of the total IR luminosity due to the uncertain dust temperature.

We note that the confusion limit for a 3.5m-class telescope, such as Herschel, is ten times larger than the depth it can reach in one hour (5σ). With a source density of 12.8 sources per square degree at the $500\mu\text{m}$ confusion limit (25 mJy), or equivalently one source in a field of 17 arcmin on a side, this shows that the best strategy at this wavelength is to go for very large and moderately shallow surveys, in order to identify the rare and very luminous distant galaxies.

For comparison, we also illustrated the ground-based capacity of ARTEMIS built by CEA-Saclay which will operate at the ESO 12 m-telescope facility APEX (Atacama Pathfinder EXperiment) at 200, 350 and $450\mu\text{m}$ and SCUBA-2 that will operate at the 15 m telescope JCMT at 450 and $850\mu\text{m}$. To avoid confusion between all instruments, we only show the average wavelength $400\mu\text{m}$ for a 12 m-class telescope and $850\mu\text{m}$ for a 15 m-class telescope (Fig. C.1). Although the confusion limit in the $850\mu\text{m}$ passband is ten times below that of Herschel at the largest wavelengths, this band is not competitive with the $\sim 400\mu\text{m}$ one which should be priorities for ARTEMIS and SCUBA-2 for the study of distant galaxies, or with the 70 and $100\mu\text{m}$ ones for a 3.5 m space experiment such as SPICA and Herschel, for redshifts below $z \sim 5$. We also note that only in these two passbands will the cosmic IR background be resolved with these future experiments (see Table C.1), which suggests that a larger telescope size should be considered for a future experiment to observe the far IR Universe above $100\mu\text{m}$ and below the wavelength domain of ALMA. We did not mention here ALMA since it will not be affected by these confusion issue: due to its very good spatial resolution, will be limited to either small ultradeep survey, hence missing rare objects or follow-ups of fields observed with single dish instruments, e.g. ARTEMIS. Finally, the JWST that will operate in the mid IR will be a very powerful instrument to probe the faintest star forming galaxies in the distant Universe, but predictions are difficult to produce at

Table C.1. Fraction of the CIRB resolved by confusion-limited Herschel surveys

	PACS 70 μm	PACS 100 μm	PACS 160 μm	SPIRE 250 μm	SPIRE 350 μm	SPIRE 500 μm
$F_{\text{confusion}}$ (mJy)	0.056	0.54	10.0	20.0	25.1	25.1
IGL ^a @ $F_{\text{confusion}}$	9.14	12.3	6.27	1.98	0.55	0.058
CIRB ^a	9.51	14.0	15.3	10.3	5.47	2.29
% CIRB resolved	96.1 %	87.8 %	41.1 %	19.1 %	10.0 %	2.5 %

^a Units: $\text{nW}\cdot\text{m}^{-2}\cdot\text{sr}^{-1}$

the present stage since it was already found that extrapolations from the mid to far IR become less robust already at $z \sim 2$ (e.g. Daddi et al. 2007b; Papovich et al. 2007; Pope et al. 2008).

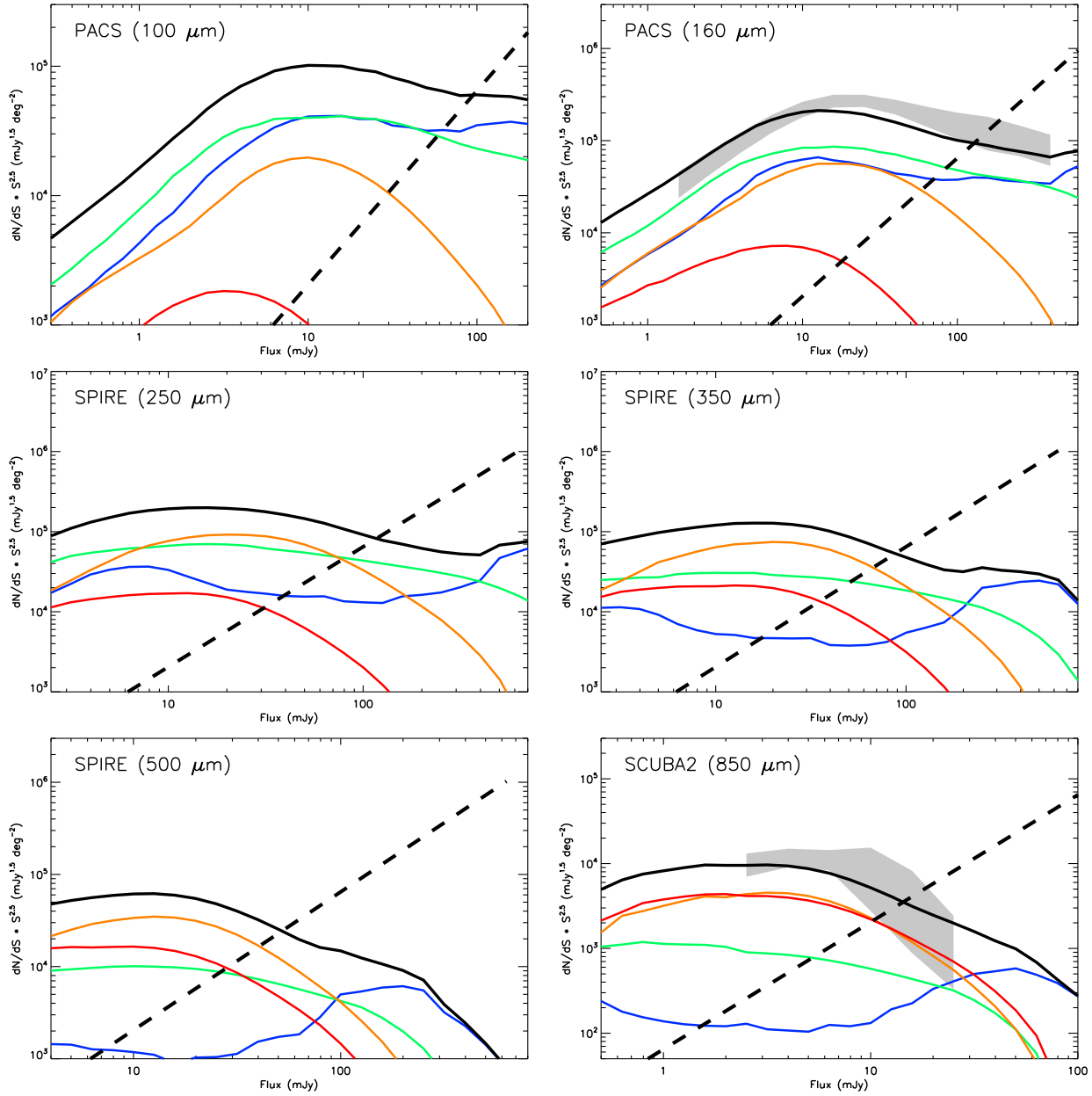


Fig. C.3. Counts predicted from the inversion in the far-infrared and sub-mm (solid line). The counts are decomposed in redshift bins (blue= $z < 0.5$, green= $0.5 < z < 1.5$, orange= $1.5 < z < 2.5$, red= $z > 2.5$). The oblique dashed line corresponds to the limit in statistics due to the smallness of a field like GOODS North+South or 0.07 square degrees: less than 2 galaxies per flux bin of width $\delta \log F = 0.1$ dex are expected below this limit.

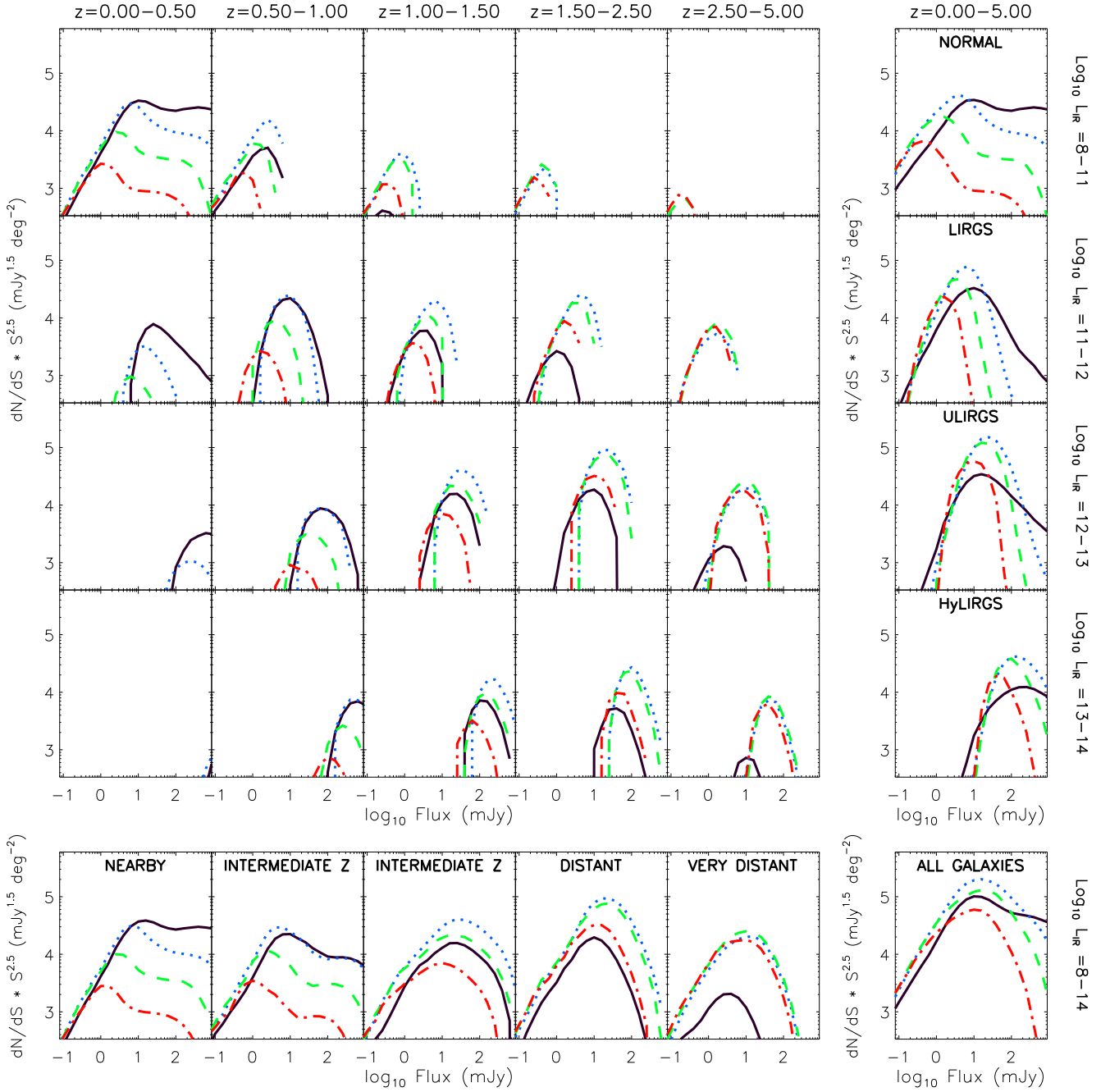


Fig. C.4. Differential counts predicted from the non-parametric inversion for future Herschel observations: PACS 100 μm (solid black), SPIRE 250 μm (dotted blue), SPIRE 350 μm (dashed green), SPIRE 500 μm (dot-dashed red) decomposed simultaneously in redshift and L_{IR}.