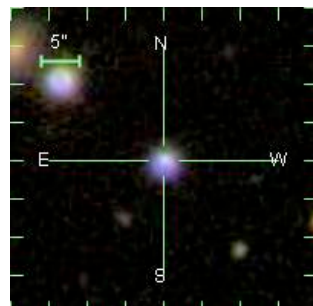


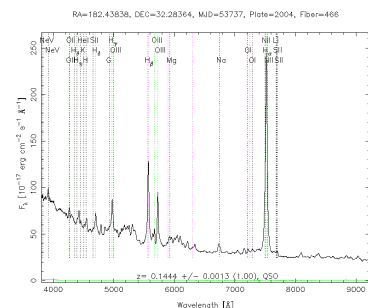
STAR ra=182.43836322, dec=32.28364177, ObjId = 587739505542758402

```
mode      PRIMARY
status    TARGET PRIMARY OK_STRIPE OK_SCANLINE PSEGMENT RESOLVED OK_RUN GOOD SET
flags     STATIONARY BINNED1 MANYPETRO
PrimTarget TARGET_SERENDIP_FIRST TARGET_ROSAT_D TARGET_ROSAT_C TARGET_ROSAT_B
          TARGET_ROSAT_A TARGET_QSO_FIRST_CAP TARGET_QSO_CAP TARGET_QSO_HIZ
SecTarget
```



<u>u</u>	<u>g</u>	<u>r</u>	<u>i</u>	<u>z</u>		
17.55	17.33	17.21	16.85	16.94		
<u>err_u</u>	<u>err_g</u>	<u>err_r</u>	<u>err_i</u>	<u>err_z</u>		
0.01	0.00	0.01	0.01	0.01		
<u>run</u>	<u>rerun</u>	<u>camcol</u>	<u>field</u>	<u>obj</u>	<u>rowc</u>	<u>colc</u>
4599	40	3	87	2	160.7	242.7
<u>fiberMag_r</u>	<u>petroMag_r</u>	<u>devMag_r</u>	<u>expMag_r</u>	<u>psfMag_r</u>	<u>modelMag_r</u>	
17.57	17.24	17.21	17.22	17.30	17.21	
<u>extinction_r</u>	<u>petroRad_r</u>		<u>parentId</u>		<u>nChild</u>	
0.05	1.292		587739505542758401		0	

<u>plate</u>	<u>mjd</u>	<u>fiberId</u>	<u>z</u>	<u>zErr</u>	<u>zConf</u>	<u>specClass</u>	<u>ra</u>	<u>dec</u>	<u>fiberMag_r</u>	<u>objId</u>
2004	53737	466	0.144	0.00125	0.999889	QSO	182.43838	32.28364	17.56	587739505542758402



zStatus	XCORR_EMLINE
zWarning	OK
PrimTarget	TARGET_SERENDIP_FIRST TARGET_ROSAT_D TARGET_ROSAT_C TARGET_ROSAT_B TARGET_ROSAT_A TARGET_QSO_FIRST_CAP TARGET_QSO_CAP TARGET_QSO_HI_Z
SecTarget	
eClass	0.458339
emZ	0.145
emConf	0.902425
xcZ	0.144
xcConf	0.999889

<u>catalog</u>	<u>delta</u>	<u>propermotion</u>	<u>angle</u>	<u>blue</u>	<u>red</u>
USNO	0.089709	0.351102	291.63739	16.809999	16.83
<u>catalog</u>	<u>delta</u>	<u>peak</u>	<u>major</u>	<u>minor</u>	<u>pa</u>
FIRST	0.405794	1.66	3.27	0.42	26.1
<u>catalog</u>	<u>delta</u>	<u>cps</u>	<u>hard1</u>	<u>hard2</u>	<u>extent</u>
ROSAT	10.098784	0.5652	-0.62	-0.22	25