

# Astrophysical false positives in direct imaging for exoplanets: a white dwarf close to a rejuvenated star <sup>★</sup>

A. Zurlo<sup>1,2</sup>, A. Vigan<sup>1</sup>, J. Hagelberg<sup>3</sup>, S. Desidera<sup>2</sup>, G. Chauvin<sup>4</sup>, J. M. Almenara<sup>1</sup>,  
K. Biazzo<sup>5</sup>, M. Bonnefoy<sup>6</sup>, J. C. Carson<sup>7</sup>, E. Covino<sup>5</sup>, P. Delorme<sup>4</sup>, V. D'Orazi<sup>8,9</sup>, R. Gratton<sup>2</sup>, D. Mesa<sup>2</sup>, S. Messina<sup>10</sup>,  
C. Moutou<sup>1</sup>, D. Segransan<sup>3</sup>, M. Turatto<sup>2</sup>, S. Udry<sup>3</sup>, F. Wildi<sup>3</sup>

<sup>1</sup> Aix Marseille Université, CNRS, LAM (Laboratoire d'Astrophysique de Marseille) UMR 7326, 13388, Marseille, France

<sup>2</sup> INAF-Osservatorio Astronomico di Padova, Vicolo dell'Osservatorio 5, 35122, Padova, Italy

<sup>3</sup> Geneva Observatory, University of Geneva, Chemin des Maillettes 51, 1290, Versoix, Switzerland

<sup>4</sup> Institut de Planétologie et d'Astrophysique de Grenoble, UJF, CNRS, 414 rue de la piscine, 38400, Saint Martin d'Hères, France

<sup>5</sup> INAF-Osservatorio Astronomico di Capodimonte, salita Moiariello 16, 80131, Napoli, Italy

<sup>6</sup> Max-Planck-Institute für Astronomie, Königstuhl 17, 69117, Heidelberg, Germany

<sup>7</sup> Department of Physics & Astronomy, College of Charleston, 58 Coming St., Charleston, SC 29424, USA

<sup>8</sup> Department of Physics & Astronomy, Macquarie University, Balaclava Rd, North Ryde, Sydney, NSW 2109, Australia

<sup>9</sup> Monash Centre for Astrophysics, Monash University, School of Mathematical Sciences, Building 28, Monash University, Melbourne, VIC 3800, Australia

<sup>10</sup> INAF-Osservatorio Astrofisico di Catania, Via S. Sofia 78, 95123, Catania, Italy

Accepted for publication in A&A; 14 April 2013

## ABSTRACT

**Context.** As is the case for all techniques involved in the research for exoplanets, direct imaging has to take into account the probability of so-called astrophysical *false positives*, which are phenomena that mimic the signature of objects we are seeking.

**Aims.** In this work we aim to present a case of a false positive found during a direct imaging survey conducted with VLT/NACO. A promising exoplanet candidate was detected around the K2-type star HD 8049 in July 2010. Its contrast of  $\Delta H = 7.05$  at 1.57 arcsec allowed us to guess the presence of a  $35 M_{\text{Jup}}$  companion at 50 projected AU, for the nominal system age and heliocentric distance.

**Methods.** To check whether it was gravitationally bound to the host star, as opposed to an unrelated background object, we re-observed the system one year later and concluded a high probability of a bound system. We also used radial velocity measurements of the host star, spanning a time range of  $\sim 30$  yr, to constrain the companion's mass and orbital properties, as well as to probe the host star's spectral age indicators and general spectral energy distribution. We also obtained for the companion *U*-band imaging with EFOSC and *NIR* spectroscopy.

**Results.** Combining all these information we conclude that the companion of HD 8049 is a white dwarf (WD), with temperature  $T_{\text{eff}} = 18800 \pm 2100$  K and mass  $M_{\text{WD}} = 0.56 \pm 0.08 M_{\odot}$ . The significant radial velocity trend coupled with the imaging data indicate that the most probable orbit has a semimajor axis of about 50 AU. The discrepancy between the age indicators suggested against a *bona-fide* young star. The moderately large level of chromospheric activity and fast rotation, mimicking the properties of a young star, might be induced by the exchange of mass with the progenitor of the WD. This example demonstrates some of the challenges in determining accurate age estimates and identifications of faint companions.

**Key words.** Techniques: high angular resolution - spectroscopic - Stars: white dwarfs - brown dwarfs - individual: HD 8049 - binaries: visual

## 1. Introduction

In the search for extrasolar planets, we are frequently faced with objects or physical phenomena that mimic the signature of a substellar object — the so-called astrophysical *false positives*. The most commonly used techniques in the search for exoplanets are the radial velocity, transit, TTV (Transit Timing Variation), microlensing and direct imaging techniques. A large fraction of the planets discovered so far has been detected through the radial velocity technique. Rotational modulations of star spots and magnetic activity cycles might produce spurious, periodic, radial velocity signals that mimic planet signatures (see

e.g. [Queloz et al. 2001](#); [Lovis et al. 2011](#)). A number of controversial cases have been reported in the literature (e.g. [Setiawan et al. 2008](#); [Huélamo et al. 2008](#); [Hernán-Obispo et al. 2010](#); [Figueira et al. 2010](#)). Simultaneous monitoring of activity indicators, spectral line profile changes and photometric variations may allow one to recognize the true origin of the radial velocity variations and to at least partially account for them (see e.g. [Boisse et al. 2011](#); [Lanza et al. 2010](#); [Dumusque et al. 2012](#)).

Transit searches are even more heavily plagued by false positives. Various kinds of eclipsing binaries can mimic a transiting planet photometric curve. Such false positives can often outnumber the true exoplanet detections ([Brown 2003](#)). The phenomenon of blended eclipsing binaries is the most severe, as described in [O'Donovan et al. \(2006\)](#). To help mitigate these adverse effects, various observational diagnostics, based on the photometric light curves or on additional spectroscopic or pho-

<sup>★</sup> Based on observations collected at La Silla and Paranal Observatory, ESO (Chile): Programs 184.C-0567 (NAOS-CONICA), 184.D-1151 (EFOSC), 60.A-9036 (HARPS), 089.C-0665 (SINFONI). Based on the All Sky Automated Survey (ASAS) photometric data.

tometric observations, have been developed. Statistical tools can also be exploited to explore all possible scenarios of binary systems and the probability of their occurrence (e.g. BLENDER code, Torres et al. 2011, PASTIS code, Díaz et al., in preparation).

Timing variations in eclipsing binaries might be signatures of circumbinary planets, but alternative explanations cannot be firmly ruled out (Zorotovic & Schreiber 2012). A recent case of TTVs induced by stellar activity (star spot features modulating the brightness of the host) instead of the gravitational influence of a planet is described in Barros et al. (2013). Finally, a case of a possible microlensing planet detection was recently revealed to be a false positive, resulting from the variability of the lensed star (Gould et al. 2012).

Concerning the direct imaging technique, the subject of this work, it may occur that the detected candidate companion is not gravitationally bound to the host star. Detection of unbound objects is frequent since direct imaging surveys typically have better sensitivities to planets far from the host star, where a higher contrast can be reached (see e.g. Chauvin et al. 2010; Vigan et al. 2012). If the follow-up observation is close in time to the first epoch and the displacement of the star on the sky due to proper motion is small, it may be challenging to determine with a high probability whether an object is bound. One example is given by Metchev & Hillenbrand (2009) where an object that was originally thought to be compatible with being bound, based on the proper motion test, was determined through spectroscopy to be a background M-star. Moreover, the case of the false positive object around IM Lupi (Mawet et al. 2012) teaches that, when the distance determination is complex, it is possible to miscalculate the relative certainties of a bound versus unbound interpretation. Secondly, even after a candidate companion is shown to be bound, the system might prove to be a stellar binary, which is the case of the object of our study.

Finally, in order to meaningfully characterize the companion, the system age must be accurately determined, as the luminosity of substellar objects depends strongly on the age of the system (younger age corresponds to a brighter companion magnitude, see e.g. Baraffe et al. 2003; Madhusudhan et al. 2011); spurious young stars might therefore lead to poorly classified companions. In this paper we present the case of such a spurious young star, along with an originally misidentified substellar candidate, found in the NACO Large Program (NACO-LP<sup>1</sup>; Chauvin 2010).

The object of our study, HD 8049, was observed in July 2010. The target is a solar neighborhood K2-star, with a distance of 33.6 pc. The companion found from the direct imaging observations had an *H*-band magnitude consistent with a substellar mass, based on the nominal age of the central star. However, after a deeper analysis, presented in this paper, it is concluded to be a white dwarf (WD). The case is similar to that of the object orbiting Gliese 86 (see Mugrauer & Neuhäuser 2005), initially considered a brown dwarf by Els et al. (2001). Other cases of close WD companions around HD 147513 and HD 27442 are described in Porto de Mello & da Silva (1997) and Chauvin et al. (2007) respectively.

Sometimes, as in the case presented here, a false positive turns out to be an interesting object: among known nearby WD this target is in fact one of the hottest. Because it is part of a close binary system, it yields insights into how those types of object interact with their companions.

**Table 1.** Resuming table of the observations of HD 8049.

Instrument	Date	Type of Data
CORAVEL	June 14 UT, 1983	1 RV p., <i>V</i> spectrum
	December 31 UT, 1983	1 RV p., <i>V</i> spectrum
	November 30 UT, 1985	1 RV p., <i>V</i> spectrum
CORALIE(98)	from December 26 UT, 2000 to January 21 UT, 2007	43 RV points
HARPS	September 15 UT, 2004	1 RV p., <i>V</i> spectrum
CORALIE(07)	from July 3 UT, 2007 to July 8 UT, 2012	20 RV points
NACO	July 30 UT, 2010	<i>H</i> -band imaging
	July 28 UT, 2011	<i>H</i> -band imaging
EFOSC	December 21 UT, 2011	<i>U</i> -band imaging, <i>V</i> spectrum
SINFONI	August 28 UT, 2012	<i>JHK</i> spectra

This work is structured as follows: we present the observations in Section 2; we show the companion characteristics in Section 3; we summarize the stellar properties and how they are influenced by the companion in Section 4; the properties of the binary system are discussed in Section 5; and conclusions are drawn in Section 6.

## 2. Observations and data reduction

HD 8049 was observed with several instruments and techniques. All data we collected for this analysis are listed in Table 1 along with the related instrumentation, date of observation and technique.

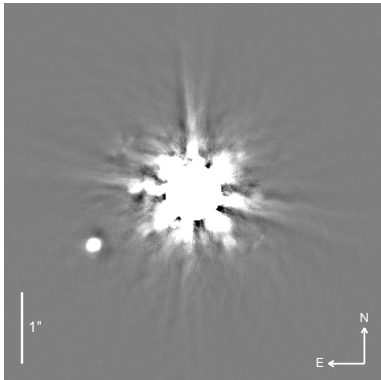
### 2.1. NACO observations

HD 8049 was observed as part of the NACO Large Program (NACO-LP) imaging survey. We used VLT/NACO (Lenzen et al. 2003; Rousset et al. 2003) high-contrast Adaptive Optics (AO) system with the *H*-band (1.33–1.99  $\mu\text{m}$ ) and the S13 camera, which provides a spatial sampling of  $\sim 13$  mas/pixel and a field of view (FoV) of  $14'' \times 14''$ . The target was observed in pupil-tracking mode to allow implementation of angular differential imaging (ADI, Marois et al. 2006) data analysis techniques. The observing sequence consisted of a series of unsaturated images of the point spread function (PSF), which served as reference for differential photometry and astrometry, and a series of deep saturated exposures optimized for the detection of faint companions. Data reduction for saturated and unsaturated sequences followed standard procedures (flat-fielding, sky subtraction, bad pixel correction). The saturated sequence was then analysed with two methods: (1) the LOCI algorithm (Lafrenière et al. 2007) with a separation criterion  $N_\delta = 0.75$  FWHM, and (2) a spatial filtering of all images in a  $5 \times 5$  FWHM box followed by de-rotation and median-combination. Differential astrometry was performed using fitting of a 2D Gaussian profile on the primary star and on the point sources detected in the reduced images.

The target was first observed on July 30 UT, 2010. A faint point source (hereafter HD 8049 B) at a separation of  $\rho = 1.566 \pm 0.006''$  and with a position angle of  $\theta = 118.4 \pm 0.2$  deg was detected with a magnitude difference  $\Delta H = 7.1 \pm 0.1$  mag (see Figure 1). Follow-up observations on July 28 UT, 2011 revealed that the point source was co-moving with the primary. Thanks to the high proper motion of the central star ( $\mu_\alpha = 65.99 \pm 1.18$  mas/yr and  $\mu_\delta = -240.99 \pm 0.98$  mas/yr), a  $\chi^2$  probability test on  $\Delta\alpha$  and  $\Delta\delta$  with respect to the star at two epochs rejected the possibility (at 99% certainty) that the object

<sup>1</sup> ESO program 184.C-0567, PI J.-L. Beuzit, “Probing the Occurrence of Exoplanets and Brown Dwarfs at Wide Orbits”.

was a background source. The measured contrast, along with our original age estimate and the measured astrometry, led us to conclude the presence of a  $35 M_{\text{Jup}}$  companion at 50 AU projected separation.



**Fig. 1.** VLT/NACO,  $H$ -band image ( $1.65 \mu\text{m}$ ) of the companion. The frame was generated from the median combination of processed images having undergone spatial filtering ( $5 \times 5 \lambda/D$  box) and de-rotation. The central core of the PSF is saturated and has been masked in this image.

## 2.2. CORAVEL, CORALIE and HARPS high resolution spectroscopy

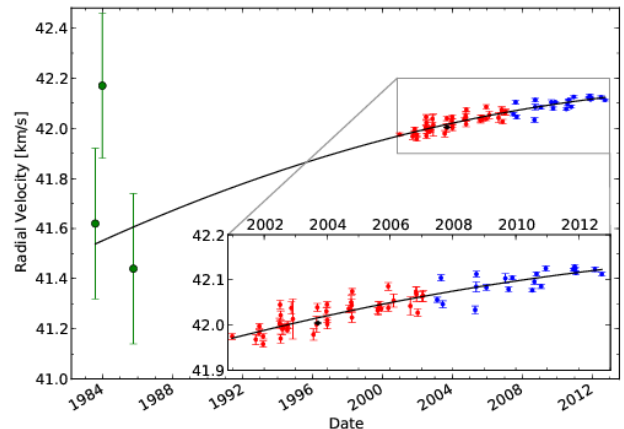
HD 8049 was observed as part of a long term extra-solar planet search program started in June 1998 with the CORALIE high-resolution fibre-fed echelle spectrograph mounted on the 1.2 m Euler Swiss telescope at La Silla (ESO, Chile). In addition to the CORALIE data, we obtained a spectrum with HARPS. Finally, we used the CORAVEL database (Baranne et al. 1996) and extracted 3 radial velocity (RV) observations with a 300 m/s precision (Baranne et al. 1996). This enabled us to have a total time-span of nearly 29 years.

For these three instruments, radial velocities were computed by cross-correlating the observed stellar spectra with a binary mask, whose non-zero zones correspond to the theoretical positions and widths of stellar absorption lines at zero velocity. For HARPS and CORALIE, the instrumental velocity drifts were monitored and corrected using the “simultaneous thorium referencing technique” with dual fibres (more details in Baranne et al. 1996), whereas for CORAVEL a standard radial velocity star (HD 168454) was used for calibration. Radial velocity points are shown in Figure 2. The trend in the radial velocity points is likely produced by the influence of a more massive object than a brown dwarf. Additionally, activity indicators (S index,  $\log R_{\text{HK}}$ ) and the projected rotational velocity were also measured on the CORALIE and HARPS spectra.

## 2.3. NTT/EFOSC

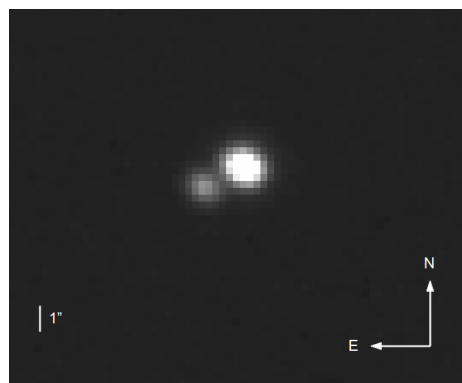
We obtained 10 images of HD 8049 on December 21 UT, 2011, with EFOSC2 at the NTT (ESO, Chile). Each frame was taken with the Johnson  $U$  filter, a 0.2 s exposure to avoid saturation,  $2 \times 2$  binning and seeing of  $0.8''$ . We reduced the  $U$ -band images with standard IRAF<sup>2</sup> tasks. We fitted the two objects with

<sup>2</sup> IRAF is distributed by the National Optical Astronomy Observatory, which is operated by the Association of Universities



**Fig. 2.** Radial velocity of the star measured with four instruments: CORAVEL (green), CORALIE98 (red), CORALIE07 (blue) and HARPS (black). The solid black line is a least-squares fit of a quadratic RV trend. While the drift information alone is consistent with either a BD or WD interpretation, the inclusion of the separation information, as gathered from NACO, allows us to rule out the BD possibility.

Moffat profiles and performed aperture photometry on each star after subtracting contributed flux from the neighbor star. The resolved binary system had a magnitude difference of  $\Delta U = 1.714 \pm 0.023$  mag, as shown in Figure 3. The difference was calculated taking into account the correction for the  $U - B$  color index of the two stars using equation (9) of the EFOSC2 manual<sup>3</sup>. We used for the K star the value listed in Table 15.7 of Allen (1977) and for the WD we considered the colors in the range of effective temperature,  $T_{\text{eff}}$ , from 15000 K to 25000 K (see Sec 3.2). The measured values of the projected separation,  $\rho = 1.56 \pm 0.02''$ , and the position angle,  $\theta = 118 \pm 0.5$  deg, were compatible with NACO measurements.



**Fig. 3.**  $U$ -band EFOSC image of the binary system. HD 8049 B, in the south east side, is 1.7 mag fainter.

for Research in Astronomy (AURA) under cooperative agreement with the National Science Foundation.

<sup>3</sup> EFOSC2 manual, version 3.6. ESO user facilities.

During the same night, we performed spectroscopy of the system. The n.11 grism and the 1'' slit were used, providing a resolution  $R \sim 360$  over the range between 3500–7400 Å. The slit was oriented along the two stars (i.e. PA = 121 deg). We obtained two frames of 8 s exposure.

The spectral reduction was done using standard IRAF tasks. The raw data were bias subtracted and flat-field corrected. The spectra were extracted with the IRAF task *apall*, wavelength calibrated using arc lamp exposures, and cross-correlated with the sky lines. The relative flux calibration was performed by deriving the sensitivity curve for the instrument set-up from the spectroscopic standard star L745-46A (Hamuy et al. 1994).

We found that a low S/N signature of HD 8049 B was present in the blue part of the spectrum; its contribution is completely blended with that of the primary star.

#### 2.4. VLT/SINFONI

The companion was further characterized on August 28 UT, 2012 using the Spectrograph for INtegral Field Observations in the Near Infrared (SINFONI, see Eisenhauer et al. 2003; Bonnet et al. 2004b,a) mounted at the VLT/UT4. SINFONI provides AO assisted integral field spectroscopy in the near-infrared. It is composed by the SPectrograph for Infrared Faint Field Imaging (SPIFFI) fed by a modified version of the Multi-Applications Curvature Adaptive Optics system (MACAO, see Bonnet et al. 2003). We used the gratings *J* and *H + K* to cover the 1.1–1.4 and 1.45–2.45  $\mu\text{m}$  ranges at a spectral resolution of  $\sim 2000$  and  $\sim 1500$  respectively. The smallest plate scale (12.5 mas) was used, enabling Nyquist sampling of the PSF. The primary served as a reference for the AO wavefront sensor and was kept outside the instrument field of view (0.8''  $\times$  0.8''). Each sequence was composed of 12 acquisitions on the source with small dithering and one acquisition on the sky. Immediately after observing our science targets, we observed the standard star HIP 17280 (B5V) following an AB pattern to correct our spectra for telluric features. HD 8049 and the standard were both observed under poor atmospheric conditions with a seeing of 1.3–1.5'', although the AO loop remained stable, and airmass was lower than 1.1.

We homogeneously reduced our dataset with the ESO data reduction pipeline version 1.9.8 (Abuter et al. 2006). The pipeline successfully carried out bad pixels detection, flat fielding, distortion coefficient computation, and wavelength calibration using calibration frames acquired the day after the observations. Individual datacubes were reconstructed from sky-subtracted object frames and merged into a final mosaicked datacube. Datacubes of telluric standard stars were obtained in a similar way. Finally, we integrated the source flux in each final datacube over selected apertures to optimize the signal to noise ratio without introducing differential flux losses. The spectra of the standard star were corrected from their intrinsic features and divided by a black body at the appropriate temperature (Pickles 1998). The SINFONI near-infrared spectrum of the object is shown in Figure 4.

### 3. Nature and properties of HD 8049 B

#### 3.1. Early discovery

HD 8049 was identified as a binary system by van den Bos (1929) in 1928. A projected separation  $\rho = 3.19''$  and a position angle  $\theta = 153.1$  deg were measured at epoch 1928.81. We corrected for the precession effect as listed in Heintz (2000) and find  $\theta = 153.6$  deg. The original paper did not provide any error bar

on the measurement, just a note that there were good observing conditions. We assumed an error of 100 mas on  $\Delta\alpha$  and  $\Delta\delta$ . The magnitude resulting from the visual observations was 13.5 mag (rounded to 0.5 mag) and a bluish color was reported; the assumed error is 0.5 mag. This is the only available measurement of the pair listed in the Washington Double Star (WDS) Catalog (Mason et al. 2001) before our observations. This position is possibly compatible with the one measured in our EFOSC *U*-band images and with the NACO results, once the time lapse is considered. Table 2 summarizes the available astrometry, including the two epochs from NACO.

From NACO observations spanning over 1 yr, we derive a relative motion of 2.7 mas/yr in  $\alpha$  and 30.4 mas/yr in  $\delta$ . Doing the same for 1928 vs 2010 observations we get a motion of 0.4 mas/yr in  $\alpha$  and 26 mas/yr in  $\delta$ . These determinations are obviously much smaller than the proper motion of the star ( $\mu_\alpha = 65.99 \pm 1.18$  mas/yr and  $\mu_\delta = -240.99 \pm 0.98$  mas/yr), supporting the physical association of the faint companion. The motions with respect to the central star derived from 1928 to 2010 and from 2010 to 2011 are consistent within their errors, making viable the hypothesis that the companion detected in 1928 in the optical range is the same one we found with NACO, and that we are indeed tracking the orbital motion of HD 8049 B around HD 8049 A. The characterization of the orbital properties of the binary is discussed in Section 5.1.

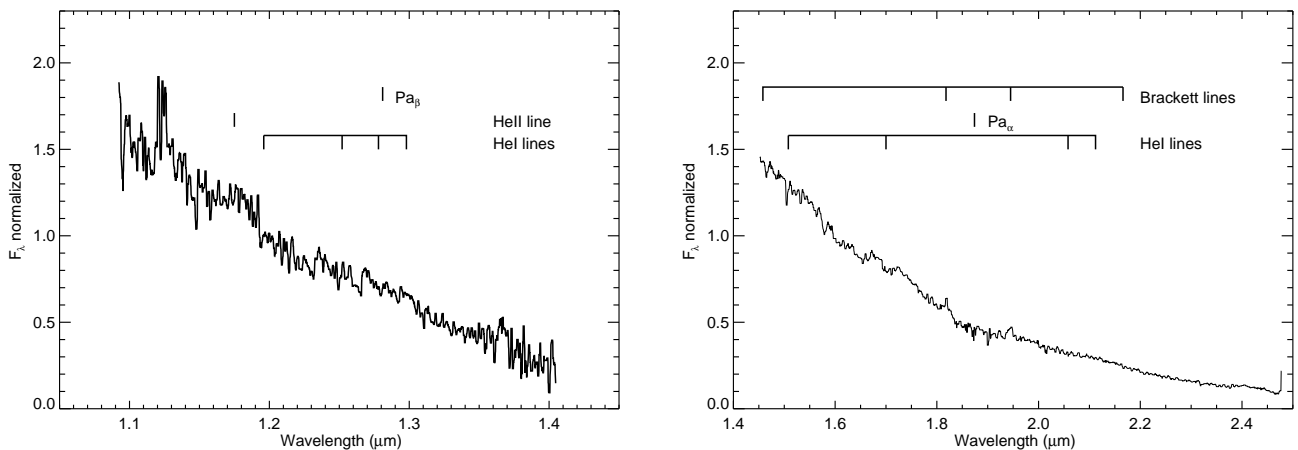
**Table 2.** Astrometry of candidate(s) around HD 8049

Epoch	$\Delta\alpha$ (mas)	$\Delta\delta$ (mas)	Reference
1928.81	$1417 \pm 100$	$-2858 \pm 100$	van den Bos (1929)
2010.58	$1378 \pm 7$	$-744 \pm 7$	NACO
2011.58	$1382 \pm 10$	$-705 \pm 10$	NACO
2011.97	$1373 \pm 24$	$-734 \pm 24$	EFOSC

#### 3.2. HD 8049 B, a new nearby WD

Considering the combined optical and NIR photometry of HD 8049 B (*U*, *V* and *H* bands) from EFOSC, the WDS Catalog and NACO observations, the hypothesis of a sub-stellar companion is unambiguously excluded. The combined visible and NIR photometry indicate HD 8049 B is most likely a WD. The SINFONI spectrum indeed confirms this assumption as the observed spectral energy distribution shows a hot and dense atmosphere that can be associated with that of a WD. The NIR spectrum is rather featureless as we do not detect any hydrogen or helium lines over the whole 1.0–2.5  $\mu\text{m}$  spectral range. Despite the low-SNR, it could indicate a featureless Helium-rich nature (DB WD) or a Hydrogen-rich white dwarf (DA) with a relatively hot atmosphere and therefore less contrasted Hydrogen lines (see Dobbie et al. 2005). Visible band spectroscopy should enable a better characterization of the WD nature of HD 8049 B, but unfortunately the low quality EFOSC spectrum does not provide such additional information due to the blend with the much brighter primary spectrum.

To further constrain the physical properties of HD 8049 B, we used the emitted fluxes in the *FUV* and *NUV*, listed in the GALEX Catalog (Martin et al. 2005). In the ultraviolet, we applied the correction for the chromospheric emission of the pri-



**Fig. 4.** SINFONI spectrum of HD 8049 B in *J*-band (left) and *HK*-band (right).

mary as described in Sect. 5.2. We refer to that section for an exhaustive summary of the photometry for the two objects.

As a preliminary analysis of the object properties, we created empirical sequences using the catalog of nearby WDs by Giammichele et al. (2012). When required photometry was unavailable there, supplemented it with available GALEX *FUV* and *NUV* magnitudes, and 2MASS *J*, *H* and *K<sub>S</sub>* magnitudes. The final sample consisted of 107 nearby ( $\leq 51$  pc) WDs: 22 with *FUV* magnitudes, 18 with *NUV* magnitudes and 84 with *J*, *H*, *K<sub>S</sub>* magnitudes calibrated by Giammichele et al. (2012).

The catalog of observed WDs listed mass,  $T_{\text{eff}}$ ,  $\log g$  (logarithm of the surface gravity) and  $t_{\text{cool}}$ , all measured from spectroscopy. As a check, we overplotted these object parameters with the expected values from theoretical sequences of Vennes et al. (2011), and confirmed that they perfectly fit, as shown in Figure 5.

We noticed that the *FUV* – *NUV* color of HD 8049 B did not fit with theoretical nor empirical models. The *NUV* magnitude is more affected by the chromosphere of the K star, but if we considered the corrected value, the discrepancies were even greater.

In order to fit our photometry measurements with the SED (Spectral Energy Distribution) of a white dwarf object, we used the MCMC (Markov Chain Monte Carlo) based code PASTIS (Díaz et al., in preparation). To extract characteristics of the WD atmosphere, we used models by Koester (2010); these models predict the mean intensity of the stellar disk and depend on  $\log g$ ,  $T_{\text{eff}}$  and the atmosphere composition; the latter is assumed to be of pure H in this case. To calculate the observed flux measured from our viewpoint on Earth, we multiplied the intensity by the solid angle of the star, calculated using the distance and the radius of the WD. The latter was obtained from the  $T_{\text{eff}}\text{--}\log g\text{--}t_{\text{cool}}\text{--}mass$  relation from Holberg & Bergeron (2006); Kowalski & Saumon (2006); Tremblay et al. (2011); Bergeron et al. (2011)<sup>4</sup> (used later on to also compute the derived parameters).

The synthetic spectrum was then corrected for interstellar extinction using the relations of Fitzpatrick (1999) with  $R_V = 3.1$ , and an assumed reddening value of  $E_{(B-V)} = 0.0106$ , as listed in the GALEX catalog. Finally, the spectrum was integrated in the bandpass listed in Table 4 as described in Bayo et al. (2008). We did not consider the *NUV* point for the reason listed previously.

We also omitted the *U* point because it can be affected by the cut-off of the atmosphere; the *V* point was rejected because the observation was made by eye and there is not an associated error.

The SEDs of the system and its components are shown in Figure 6. The fitted parameters are the distance,  $\log g$  and  $T_{\text{eff}}$ . As priors, we assumed a normal distribution with a mean distance of 33.6 pc and a standard deviation of 1.4 pc (based on the Hipparcos parallax of  $29.79 \pm 1.21$  mas, van Leeuwen (2007); for  $\log g$  we used a uniform distribution in the range 7.0–9.0; for  $T_{\text{eff}}$  we used a uniform distribution in the range 10000–40000 K.

We ran 50 chains of  $5 \times 10^5$  steps starting from random values of the priors. After removal of the *burning phase* (steps before convergence), we merged all the chains, taking into account the correlation lengths. The results of the fitted parameters are  $\log g = 7.86 \pm 0.16$  and  $T_{\text{eff}} = 18800 \pm 2100$  K. The distance remained equal to the prior. The derived parameters were  $M_{\text{WD}} = 0.56 \pm 0.08 M_{\odot}$ ,  $R_{\text{WD}} = 0.0145 \pm 0.0016 R_{\odot}$ , and cooling time  $t_{\text{cool}} = 63^{+23}_{-17}$  Myr (see Figure 6). Note that the errors of the values are the 68.3% confidence interval of the fit, and they do not take into account possible model errors.

The cooling time calculated using the empirical sequences is  $98^{+28}_{-40}$  Myr (see Fig. 7), in agreement with the SED fit. To estimate the age of the system we must add the main sequence lifetime to the cooling age of the WD. This is discussed in Sec. 5.3.

## 4. Nature and properties of HD 8049 A

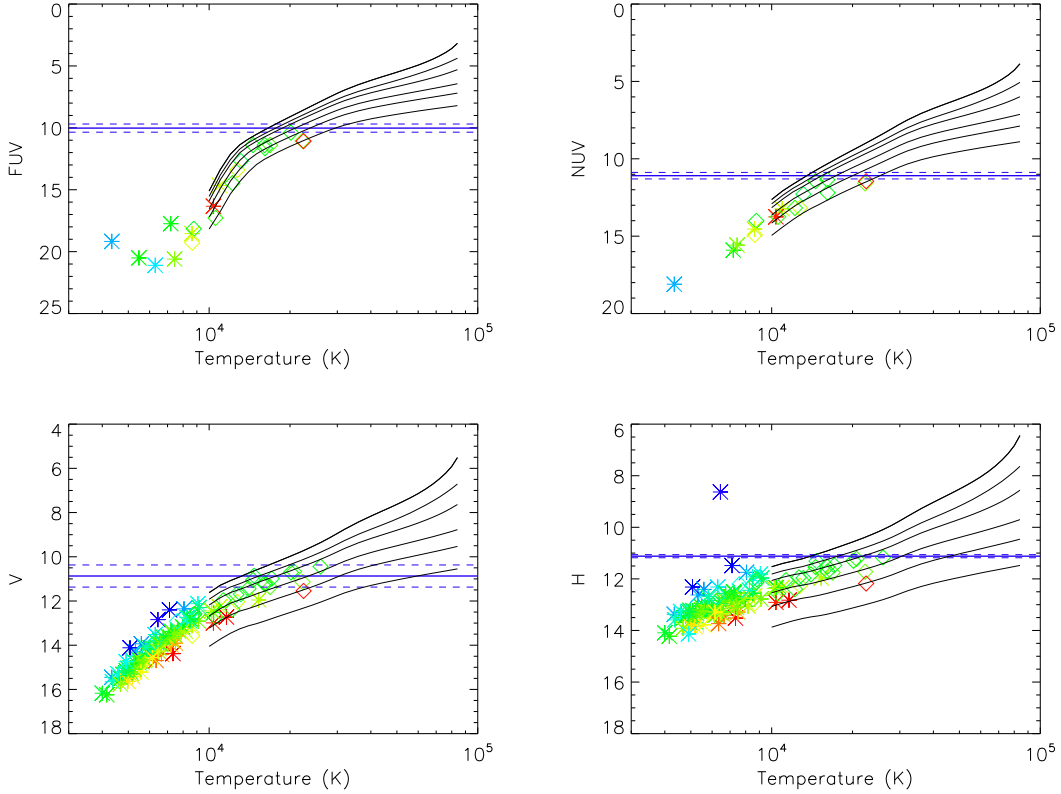
We exploited the spectroscopic data described in Sec. 2.2 and additional data from public archives with the aim of improving the age determination and other stellar parameters of the primary.

### 4.1. Rotation period

HD 8049 was observed in the All Sky Automated Survey (ASAS<sup>5</sup> Variable star catalog; Pojmanski 2002). Archive observations span from November 20 UT, 2000 to October 28 UT, 2009. After removing outliers and averaging observations collected within short time intervals (less than 2 hr), we were left with 583 data points for the rotation period search. The average photometric accuracy was 0.02 mag. The brightest *V* magnitude was  $V = 8.68 \pm 0.02$  mag. To minimize the effects of active re-

<sup>4</sup> <http://www.astro.umontreal.ca/~bergeron/CoolingModels>

<sup>5</sup> <http://www.astrouw.edu.pl/asas/>



**Fig. 5.** Absolute magnitude in different bands (from top-left *FUV*, *NUV*, *V* and *H*) versus effective temperature for white dwarf models of Vennes et al. (2011) (black lines) and sample a of nearby dwarfs collected by Giammichele et al. (2012). Stars represent objects with all magnitudes available and diamonds represent the others. Colors indicate the mass from the lowest (blue) to the highest (red ones). The continuous blue horizontal line represents the magnitude of HD 8049 B. The corresponding error bars are plotted as dashed blue lines. The plots show that the objects of the Giammichele et al. (2012) catalog are not peculiar and are well described by the theoretical models of Vennes et al. (2011).

gion growth and decay on the periodograms, we sectioned the data time series into 14 light curves. The light curve amplitude was variable, with values up to  $\Delta V = 0.04$  mag. The Lomb-Scargle analysis (Scargle 1982) was carried out on the complete time series data as well as on each of the 14 light curves. We found a rotation period of  $P = 8.3 \pm 0.1$  days in the complete time series data, and the same period in 4 out of 14 time intervals (with FAP, False Alarm Probability,  $\leq 1\%$ ). The light curve amplitude was larger than the photometric accuracy  $\sigma$  in 13 out of 14 time segments.

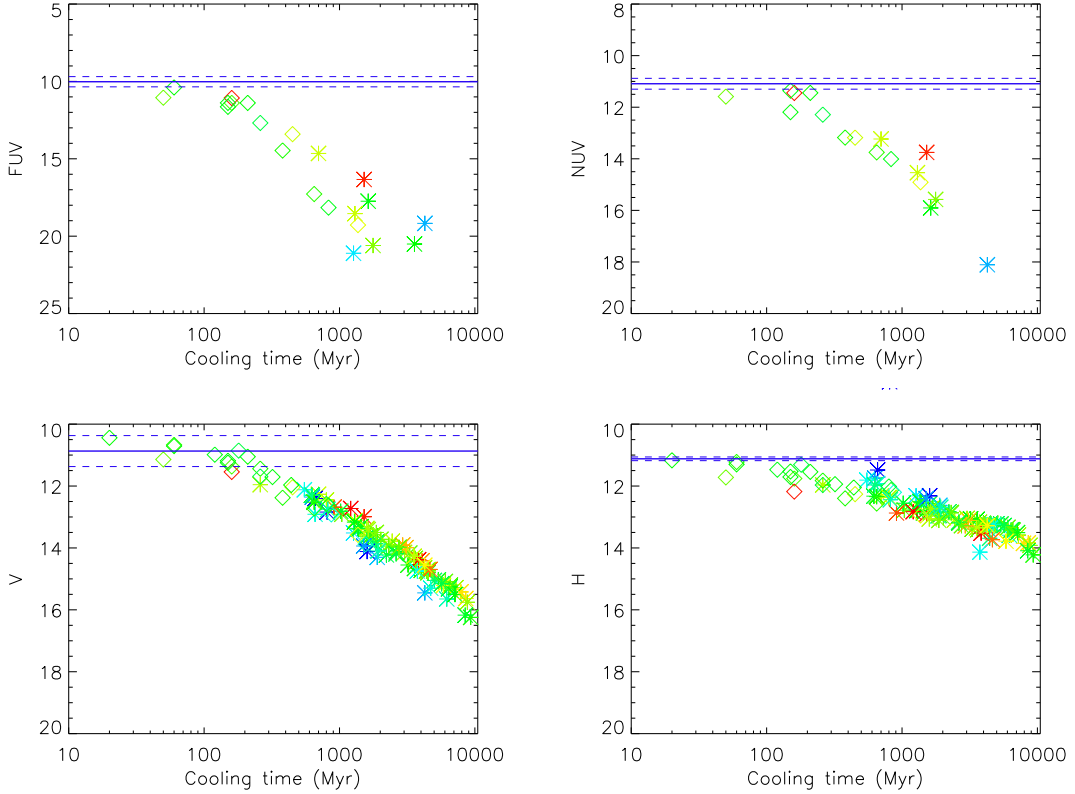
HD 8049 was also observed by SuperWASP (Pollacco et al. 2006; Butters et al. 2010). The public archive permitted us to retrieve data for the 2006 and 2007 seasons<sup>6</sup>. We carried out an analysis similar to that described for the ASAS data. After outlier removal, averaging, and data series sectioning, we found a rotation period  $P = 8.5 \pm 0.1$  days for the complete series as well as for both 2006 and 2007 seasons, with a confidence level larger than 99%. This is consistent with the period determination from ASAS data. The maximum light curve amplitude was 0.02 mag, whereas photometric accuracy was 0.01 mag. In Fig. 8 we show a summary of the period search on Super WASP data. We refer the reader to Messina et al. (2010) for a more detailed description of the photometric data analysis methods. According to the criteria adopted in Messina et al. (2011) for assigning a confidence level to the rotation period, the period of HD 8049 can be

considered *confirmed*. The  $P = 8.3$  days rotation period is compatible with the projected rotational velocity ( $3.5 \pm 1.2$  km/s, see Torres et al. 2006) for stellar radii  $R \geq 0.6 R_{\odot}$ .

#### 4.2. Age indicators

Table 3 summarizes the measurements and corresponding ages as derived from the different indicators. From our analysis of the HARPS spectrum, we confirm that no lithium is detectable, as found by Torres et al. (2006). Two sets of  $\log R_{\text{HK}}$  measurements are available: those from our CORALIE spectra and that by Gray et al. (2006). Within the uncertainties they give the same value ( $\log R_{\text{HK}} = -4.25$ ). The logarithm of the ratio of X-ray and bolometric luminosity  $\log L_{\text{X}}/L_{\text{bol}}$  was derived from ROSAT All-Sky Bright Source Catalog (Voges et al. 1999) assuming the source 1RXS J011915.1-433803 is the X-ray counterpart of HD 8049 A. The X-ray emission should be dominated by the active K dwarf primary since HD 8049 B is cooler than WDs that show significant X-ray emission ( $T_{\text{eff}} > 25000$  K, Vennes 1999). The *U*, *V* and *W* heliocentric space velocities (given in a right handed coordinate system with *U* towards the galactic centre) are taken from Holmberg et al. (2009) adopting the trigonometric parallax of  $29.79 \pm 1.21$  mas (van Leeuwen 2007). The uncertainty in the center of mass velocity due to orbital motion spans from a minimum value of 200 m/s to a maximum of 3 km/s, as determined from the simulations described in Sec. 5.1.

<sup>6</sup> <http://www.wasp.le.ac.uk/public/>



**Fig. 7.** Absolute magnitude in different bands (from top-left *FUV*, *NUV*, *V* and *H*) versus cooling age for white dwarf models of Vennes et al. (2011) (black lines) and sample a of nearby dwarfs collected by Giammichele et al. (2012). Stars represent objects with all magnitudes available and diamonds represent the others. Colors indicate the mass from the lowest (blue) to the highest (red ones). The continuous blue horizontal line represents the magnitude of HD 8049 B. The corresponding error bars are plotted as dashed blue lines. The plots show that the objects of the Giammichele et al. (2012) catalog are not peculiar and are well described by the theoretical models of Vennes et al. (2011).

The age estimates provided from these various indicators are quite discordant. Chromospheric HK emission, coronal emission, and rotation period indicate an age between 100–400 Myr. On the other hand, the lack of lithium indicates an age older than about 500 Myr. Additionally the kinematic parameters are quite far from the typical locus of young stars (Montes et al. 2001). The galactic orbit as given in Holmberg et al. (2009) has  $e = 0.19$  and  $z_{max} = 0.33$  kpc. These properties are more typical of stars with age of about 3 Gyr, as estimated from the galactic orbits of stars with small age uncertainty in the Holmberg et al. (2009) catalog. These discrepancies strongly suggest that HD 8049 A is not a bona-fide young star but is rather a peculiar object.

We identify the source of these anomalies to be the WD companion detected through direct imaging. The accretion of some amounts of mass and angular momentum by the central star at the time of mass loss from the WD progenitor might have spun-up the star, while increasing the level of magnetic activity. The presence of the WD cannot alter significantly the measurement of the rotation period and X-ray flux. Only minor effects on the  $\log R_{HK}$  measurement are expected from the contamination of the spectrum.

We conclude that the young rotation-activity age is not spurious. The central star should have been rejuvenated by the accretion of some amount of mass and angular momentum at the time of mass loss from the WD progenitor. This scenario is investigated more thoroughly in Sec. 5.3.

**Table 3.** Age indicators of HD 8049 A. The 2nd column lists the adopted value for the various parameters, and the 3rd column lists the corresponding reference; the 4th column contains the resulting age, and the last column has the adopted calibration for age determination.

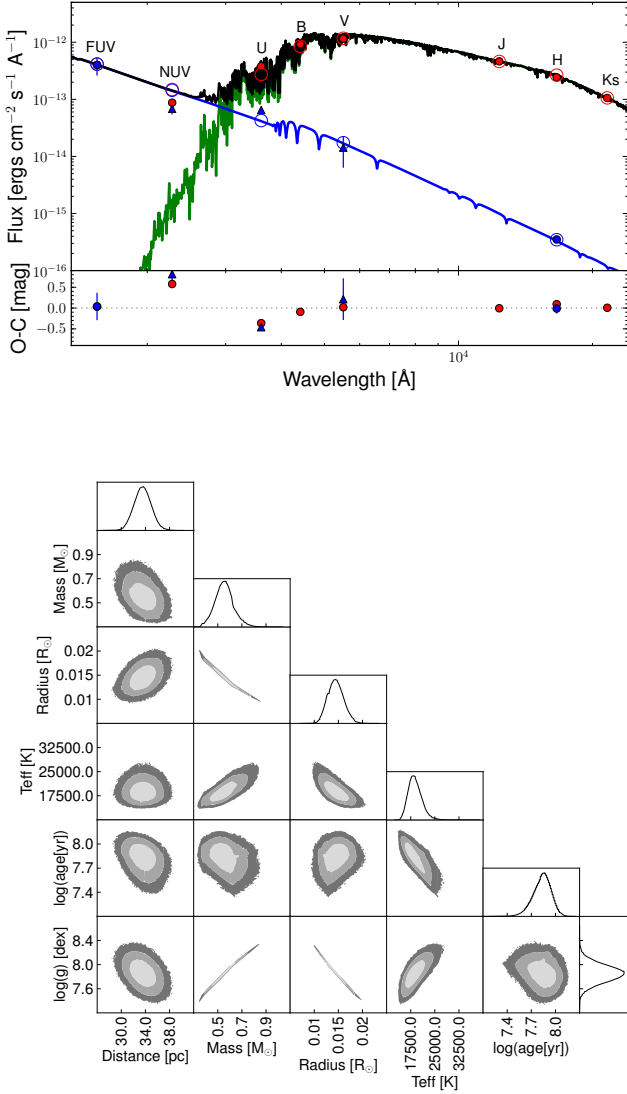
Indicator	Measure	Ref	Age (Myr)	Ref.
Li EW (mÅ)	0	1,2	>500	1
$\log R_{HK}$	$-4.25 \pm 0.05$	1,3	90	4
$\log L_X/L_{bol}$	-4.24	1	182	4
$P_{rot}$ (d)	$8.3 \pm 0.1$	1	360	4
$P_{rot}$ (d)			$380 \pm 30$	5
$U, V, W$ (km/s)	18, -47, -28	6	old (few Gyr)	1

**References.** 1: this paper; 2: Torres et al. (2006); 3: Gray et al. (2006); 4: Mamajek & Hillenbrand (2008); 5: Delorme et al. (2011) 6: Holmberg et al. (2009)

#### 4.3. Mass determination

Using our spectroscopic temperature and metallicity results, we employ the PARAM interface<sup>7</sup> (da Silva et al. 2006) to conclude

<sup>7</sup> <http://stev.oapd.inaf.it/param>

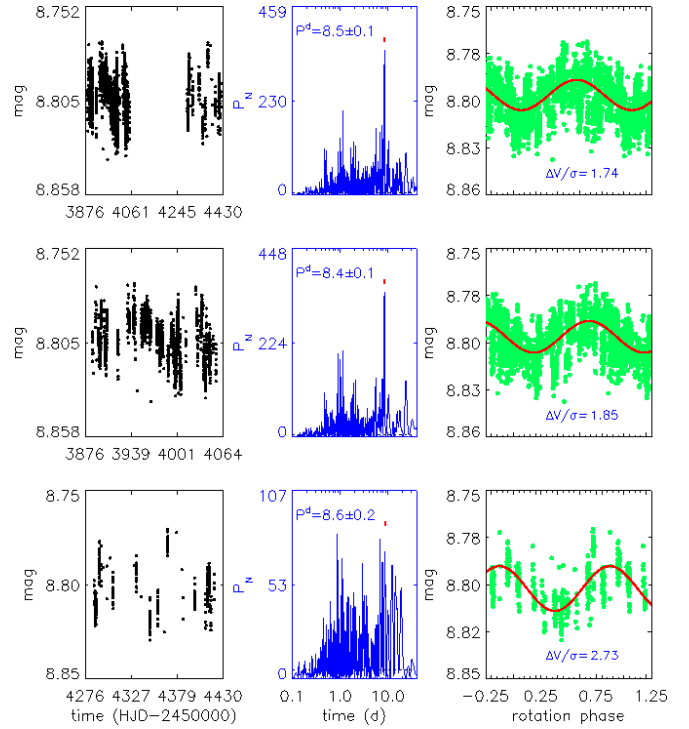


**Fig. 6.** Top: Observed magnitudes of the system plotted over the synthetic spectra. Blue points are those taken in consideration during the SED fitting of the WD. Triangle shaped ones are not considered during the PASTIS integration. Values of the magnitudes of the integrated system are represented in red and the SED in black. The primary star SED is represented in green. Bottom: Two parameters joint posterior distributions for HD 8049 B. The 68.3%, 95.5% and 99.7% confidence regions are denoted by light grey, dark gray and black areas respectively. Single PDF (Posterior Distribution Function) of each combination is shown along the sides.

a mass of  $0.804 \pm 0.023 M_{\odot}$ . The mass of the convective envelope of the star, following Murray et al. (2001), is  $0.086 M_{\odot}$ .

#### 4.4. Abundance analysis

It is well known that a considerable amount of mass can be transferred to a companion in close binary systems. This is the explanation for blue stragglers in clusters (McCrea 1964), Ba-stars and extrinsic C-stars (McClure et al. 1980; McClure 1984; McClure & Woodsworth 1990). Different signatures can be observed, depending on when and how much mass was transferred from the donor (in our case the white dwarf). The surface chem-



**Fig. 8.** Photometry time series of HD 8049 from SuperWASP: left columns display time segments of magnitudes versus Heliocentric Julian Days (HJD) (the first panel only shows the complete series). Middle columns display the Lomb-Scargle periodograms with indication of the rotation period. Right columns display the light curves phased with the rotation period and the first HJD as initial epoch. Solid curves represent the sinusoidal fit with the rotation period. The labels report the ratio of average residual from the fit and the rotational modulation amplitude.

ical composition of the current primary can therefore be used to better constrain the history of this system.

In order to better characterize the primary, and to explore possible signatures of accretion of material processed by the WD progenitor, we derived the stellar spectroscopic parameters and measured the abundances of several elements. To this aim, we used the HARPS high resolution spectrum of HD 8049 A (Sec. 2.2) and adopted the prescriptions of Biazzo et al. (2012). For a detailed description of the method, we refer to that paper.

The derivation of the iron abundance of our target was performed differentially with respect to the Sun. To this purpose, we analyzed a Ganymede spectrum acquired with HARPS at high  $S/N$ , obtaining  $\log n(\text{FeI})_{\odot} = \log n(\text{FeII})_{\odot} = 7.53 \pm 0.05$ . In the end, we found the following stellar parameters and iron abundance for HD 8049 A: effective temperature  $T_{\text{eff}} = 5050 \pm 50$  K, surface gravity  $\log g = 4.50 \pm 0.10$  dex, microturbulence velocity  $\xi = 1.42 \pm 0.05$  km/s,  $[\text{FeI}/\text{H}] = -0.10 \pm 0.02$  dex, and  $[\text{FeII}/\text{H}] = -0.10 \pm 0.05$  dex.

Looking for potential evidence of pollution by the ejecta of the precursor of the WD, we derived abundances of the s-process elements<sup>8</sup> Y, Ba, and La, which are mainly produced by low-mass AGB stars ( $\sim 1.5\text{--}3 M_{\odot}$ , e.g., Busso et al. 1999). The abundances of Y, Ba, and La were derived as in D’Orazi et al. (2012). We also gathered Cu abundances, whose 70–80% abundance

<sup>8</sup> Elements heavier than iron are mostly synthesized via neutron-capture processes, that can be slow (s) and rapid (r), where slow and rapid is compared to the the  $\beta$ -decay timescale (Burbidge et al. 1957).



in the Solar System is ascribed to massive stars (Käppeler et al. 2011). We adopted the hyperfine splitting from Steffen (1985) and the isotopic mixture from Simmerer et al. (2003) (69% for  $^{63}\text{Cu}$  and 31% for  $^{65}\text{Cu}$ ). We found  $[\text{Y}/\text{Fe}] = -0.15 \pm 0.10$ ,  $[\text{Ba}/\text{Fe}] = -0.10 \pm 0.10$ ,  $[\text{La}/\text{Fe}] = -0.12 \pm 0.10$ , and  $[\text{Cu}/\text{Fe}] = 0.00 \pm 0.07$ . Errors are those derived from the spectral synthesis.

We also measured the abundances of Na and Al because these elements are expected to be overabundant in the ejecta of intermediate-mass AGB stars (Ventura et al. 2001), which is another potential precursor of HD 8049 B. We found  $[\text{Na}/\text{Fe}] = 0.05 \pm 0.04$  and  $[\text{Al}/\text{Fe}] = 0.13 \pm 0.03$ , indicating no significant pollution from this kind of star.

## 5. System properties

### 5.1. Orbital properties

To constrain the possible orbit of the object we performed a Monte Carlo simulation following the example of Desidera et al. (2011). The simulation steps through  $1.8 \times 10^6$  random orbital elements and rejects all the orbits that do not fit both the RV trend and the astrometric data. We adopted  $M_A = 0.804 \pm 0.023 M_\odot$  and  $M_B = 0.56 \pm 0.08 M_\odot$  as described, in Sec. 4.3 and 3.2. The simulation found  $\sim 28000$  orbits consistent with the observational data. We present the allowed orbital elements in Figure 9.

The distribution of each element is shown in the histograms of Figure 10. The distribution of the inclinations is bimodal and has its peaks on the values of 5 deg and 65 deg. The argument of periastron  $\omega$  and the longitude of the node  $\Omega$  have the highest probability around values of 180 deg and 250 deg respectively. The most probable period is around 300 yr, corresponding to a semi-major axis of  $\sim 50$  AU. Among the possible configurations of the orbit, there is a lack of edge-on inclinations that can produce the correlation plots of  $\omega$  and  $\Omega$ . This is consistent with the RV trend. The orbit is likely eccentric, with a most probable value  $e = 0.55$ .

### 5.2. Broad band photometry

Table 4 lists the available broad band photometry for the system. A very bright  $FUV$  magnitude is listed in the GALEX catalog. The offset between the optical and GALEX position of  $1.67''$  along the SE direction indicates that the  $FUV$  source is better coincident with the WD rather than the K2 star. Such a bright  $FUV$  magnitude is not expected from the primary, even taking into account the star's high level of chromospheric activity (see e.g. Fig. 6 in Smith & Redenbaugh 2010). Corrections for chromospheric contribution of the primary have been calculated using equations 2 and 4 of Findeisen et al. (2011); we assumed a  $B - V$  color for the K star as given in Table 15.7 of Allen (1977); we assumed  $\log R_{\text{HK}} = -4.25$ . The final derived errors take into account the dispersion of the points used to derive the mentioned relations.

Based on the composite  $U$  magnitude of the unresolved system, we determined an individual  $U$  magnitude following the procedures described in Sec. 2.3.  $H$  magnitude was obtained with NACO observations (see Sec. 2.1).

### 5.3. System history

As mentioned in Sec. 4.2, the discrepant results of various age indicators for HD 8049 A might be qualitatively explained by the accretion of some amounts of mass and angular momentum from

**Table 4.** Broad band photometry of HD 8049

Band	Mag	Ref.
A+B		
$FUV$	$12.645 \pm 0.004$	1
$NUV$	$13.454 \pm 0.003$	1
$FUV - NUV$	$-0.809 \pm 0.005$	1
$U$	$10.098 \pm 0.031$	2
$B$	$9.626 \pm 0.028$	2
$V$	$8.734 \pm 0.027$	2
$B - V$	$+0.892 \pm 0.007$	2
$V - I$	$+0.95 \pm 0.02$	3
$U - B$	$+0.472 \pm 0.013$	2
$J$	$7.077 \pm 0.027$	4
$H$	$6.649 \pm 0.059$	4
$K$	$6.523 \pm 0.031$	4
$V - H$	$+2.04 \pm 0.06$	2,4
$V - K$	$+2.17 \pm 0.04$	2,4
A		
$FUV$	$19.68 \pm 0.57$	5
$NUV$	$15.12 \pm 0.22$	5
$U$	$10.30 \pm 0.03$	5
$V$	$8.747 \pm 0.030$	5
$H$	$6.65 \pm 0.07$	5
B		
$FUV$	$12.65 \pm 0.33$	5
$NUV$	$13.72 \pm 0.21$	5
$U$	$12.02 \pm 0.04$	5
$V$	$13.5 \pm 0.5$	6
$H$	$13.75 \pm 0.12$	5

**References.** 1: GALEX, AB magnitude system (Martin et al. 2005) 2: Cousins (1983); 3: Perryman et al. (1997); 4: 2MASS (Skrutskie et al. 2006); 5: this paper; 6: van den Bos (1929);

its WD companion HD 8049 B. Comparable cases have been discovered in the past. Jeffries & Stevens (1996) showed that the accretion of slow wind from the AGB progenitor of the WD can transfer sufficient angular momentum to speed up the companion even for orbital separation up to 100 AU. Cases of pairs formed by a WD and a fast rotating, barium-rich star have been reported by Jeffries & Smalley (1996). Another case is represented by the binary GJ86, which is known to host a giant planet and a WD companion (GJ86B; Els et al. 2001; Mugrauer & Neuhäuser 2005). GJ86 also shows anomalies in the age indicators that are similar, even if less extreme, than those we found for HD 8049; the GJ86 age indicators yield a younger age from X-ray and H&K than from kinematic (see Desidera & Barbieri 2007, App. B). Another more direct indication of wind accretion on a companion during the AGB phase is represented by the accretion disk around Mira B (Karovska et al. 1997; Ireland et al. 2007), which lies at a projected separation of about 70 AU, which is slightly larger than the most probable value for HD 8049.

Following these works we can speculate that part of the material lost through stellar wind by the WD progenitor was accreted by HD 8049 A, increasing its rotation rate and mimicking a young age for indicators that are directly or indirectly tied to stellar rotation (rotation itself, X-ray and H&K emission). Specifically, we expect that the activity and rotation age of the system is related to the time elapsed since the accretion event, i.e. the cooling age of the WD. However, the activity-rotation age might be larger than the cooling age of the WD if the primary was not spun-up to the fast rotational velocity typical of a very young star. In this scenario, increasing the mass of the WD

progenitor allows for larger amounts of accreted material, both because of large amounts of mass loss due to stellar wind at the end of AGB phase, and also because of the larger widening of the binary orbit due to mass loss. A more massive progenitor implies also a younger age for the system. On the other hand, the lack of significant abundance anomalies on HD 8049 A (Sect. 4.4) indicates that either the s-process enhancement of the material lost by the AGB progenitor is small, which may arise only for masses lower than  $1.5 M_{\odot}$ , or that the amounts of accreted material is small with respect to the heavy element content of the convective zone.

To explore the possible original configuration of the system, we used the BSE package (Hurley et al. 2002), evolving binary systems with different primary masses and orbital parameters. We used their adopted initial–final mass relationship for the WD and default parameters to take into account mass loss and wind accretion. These elements have significant uncertainty so the results are intended only for a qualitative view of the possible configuration.

A system with a  $1.2\text{--}1.5 M_{\odot}$  star initially at 30 AU will produce a WD of roughly the correct mass with a semi-major axis close to the most probable value, for current orbits presented in Sect. 5.1. The resulting age of the system (3–6 Gyr) is compatible with the kinematic properties of HD 8049. About  $0.005 M_{\odot}$  are accreted by the other component in this case, which is about 5% of the mass of the stellar convective zone as derived following the prescriptions by Murray et al. (2001).

We checked that the results using the more recent semi-empirical relationship by Salaris et al. (2009) are fully consistent with those derived using BSE. Salaris et al. (2009) found that WDs with masses in the range  $0.56\text{--}0.64 M_{\odot}$  are found in NGC 7789 (estimated age of 1.5 Gyr) and older clusters while those in younger ones, like the Hyades and Praesepe (age of about 0.65 Gyr), are more massive.

## 6. Conclusions

The substellar candidate around HD 8049 A, initially suspected based on NACO *H*-band photometry and astrometry, turned out to be a WD companion rather than a BD.

With direct imaging, second epoch observations of the object, we confirmed a bound companionship and determined the WD mass through its luminosity.

The *M/L* relation for exoplanets strongly depends on the age of the system (see e.g. models from Baraffe et al. 2003; Madhusudhan et al. 2011). For this reason, samples of stars scrutinized for low mass companions through high contrast imaging usually include a high fraction of presumably young stars. However, a misinterpretation of the age of the host star may produce false alarms and/or an erroneous calculation of the mass of the companion. This was the case of HD 8049 A, a star which appears rejuvenated by the accretion of significant angular momentum from the ejecta of the progenitor of a WD. The faint companion was confused with a  $35 M_{\text{Jup}}$  brown dwarf when the age indicated by rotation and activity was considered.

From radial velocity analysis we found a trend that was compatible with a more massive object rather than a brown dwarf. Indeed, a comprehensive analysis of age indicators revealed inconsistencies. The final clue that unequivocally confirms the WD hypothesis is the observation of the system in *U*-band. At this wavelength, a bright object is observed at the same astrometric position of the NACO candidate. The ultraviolet magnitude of this object is 1.7 mag fainter than the host star.

We found parameters for the WD assuming an atmosphere made of pure hydrogen and fitting photometry observation points. Results are:  $T_{\text{eff}} = 18800 \pm 2100$  K,  $M_{\text{WD}} = 0.56 \pm 0.08 M_{\odot}$ ,  $\log g = 7.86 \pm 0.16$  and age  $t_{\text{cool}} = 63^{+23}_{-17}$  Myr.

We made a Monte Carlo simulation, following the example of Desidera et al. (2011), to constrain the orbital parameters. We found that the WD moves in a likely eccentric orbit with a most probable period of 300 yr ( $\sim 50$  AU).

In our scenario, the existence of the WD companion (with *H*-band magnitude compatible with a sub-stellar object) and the spurious young age of the star, as derived from rotational period,  $\log R_{\text{HK}}$  and X-ray emission, are intrinsically linked. As discussed in this paper, a way to identify the spurious young stars that have been affected by wind accretion is to compare the ages resulting from several age indicators, paying attention to discrepancies between rotation-activity ages and lithium and kinematic ages. In the case that the sample is focused on young stars, such a false alarm is related to a WD with a short cooling age, which explains a young rotation-activity age for the companion. Such objects are most easily identified in the UV bandpass, as done in our study exploiting archive GALEX observations.

Resolved systems with white dwarf companions close enough to have harboured some accretion phenomena are interesting targets for further constraining the wind accretion occurring in moderately wide binaries during the asymptotic giant branch (AGB) phase of the WD progenitor. They also enable investigations of the maximum binary separation at which Ba-stars can be observed. Finally, our results confirm that there is a population of WD companions awaiting discovery even at small distance from the Sun, as suspected by Holberg (2009), and that AO imaging can play a relevant role for unveiling it.

As nearby young stars are prime targets for direct imaging planet searches, and new instrumentation optimized to this science goal is about to start operations, one might ask what is the expected frequency of the kind of false alarm we have found in NACO-LP. To this purpose, we may first consider the frequency of Ba-stars, which are systems similar to those considered here, but with initially smaller separation and shorter period. Ba-stars are the result of mass transfer from an AGB companion (the original primary of the system) to the small mass star that is currently observed. For our considered scenarios, the system is observed at a late stage in its development, when the AGB star has evolved into a WD. From a survey of  $\sim 200$  slightly evolved F dwarfs, Tomkin et al. (1989) discovered two barium dwarfs, and derived a rough frequency of  $\sim 1\%$  Ba-stars among F dwarfs; Edvardsson et al. (1993) found 6 dwarf barium stars among 200 F stars (i.e. 3%), but their binary nature remains to be proven. North & Duquennoy (1991) found a frequency of 0.5 to 1.0% Ba dwarfs among FV stars. McConnell & Gast (1972) estimated that 1% of the G and K giants in the vicinity of the Sun are Ba-stars. From a 200 star sample, Williams (1975) derived a frequency of Ba-stars among G-K giants between 1 and 4%. Bidelman (1985) obtained a frequency between 0.5 and 1%. Most Ba-stars are in binary systems with orbital periods typically longer than 100 days but less than 10 years (McClure et al. 1980; McClure 1984; McClure & Woodsworth 1990), though Jorissen et al. (1998) reported a few cases with periods outside this range. Orbits typically have low but non-zero eccentricity, linked to the fact that they are likely not produced by Roche lobe overflow; the origin is probably due to stellar wind. This is further supported by evolutionary models (Han et al. 1995).

We may consider the period and secondary mass distribution of binary stars, and estimate the fraction of systems that are of potential interest. Integrating the distribution of binary separa-

tion by Duquennoy & Mayor (1991), it comes out that at least half of the binaries containing a WD have a separation large enough that the star does not become a Ba-star. Hence, the fraction of G-K stars with a WD companion should be of the order of a few percent. This is consistent with arguments based on the initial mass function: roughly a few percent of the G-K stars should have a companion originally more massive if we assume that the mass of the two stars is independent of each other, which is probably a good approximation at least for solar type stars. Objects like HD 8049 A should therefore most likely be G-K stars with a WD companion and an original separation typically slightly larger than that required to become a Ba-star. They should also have experienced some mass and angular momentum transfer. Hence there should not be large separations.

Objects like HD 8049 A may very well pass through the pre-selection of the direct imaging candidates, failing to show up as spectroscopic binaries. Periods are long enough that RV variations are very small. Furthermore, they will not show up in astrometric binary catalogs, because periods are long that orbital motion is not distinguished from proper motion. Finally, they might also be overlooked as visual binaries because the contrast is large. Inclusion in the sample of direct-imaging planet searches also depends on the adopted age limits. For surveys focused on young stars, such as our NACO one, only companions of WDs with short cooling times might be selected.

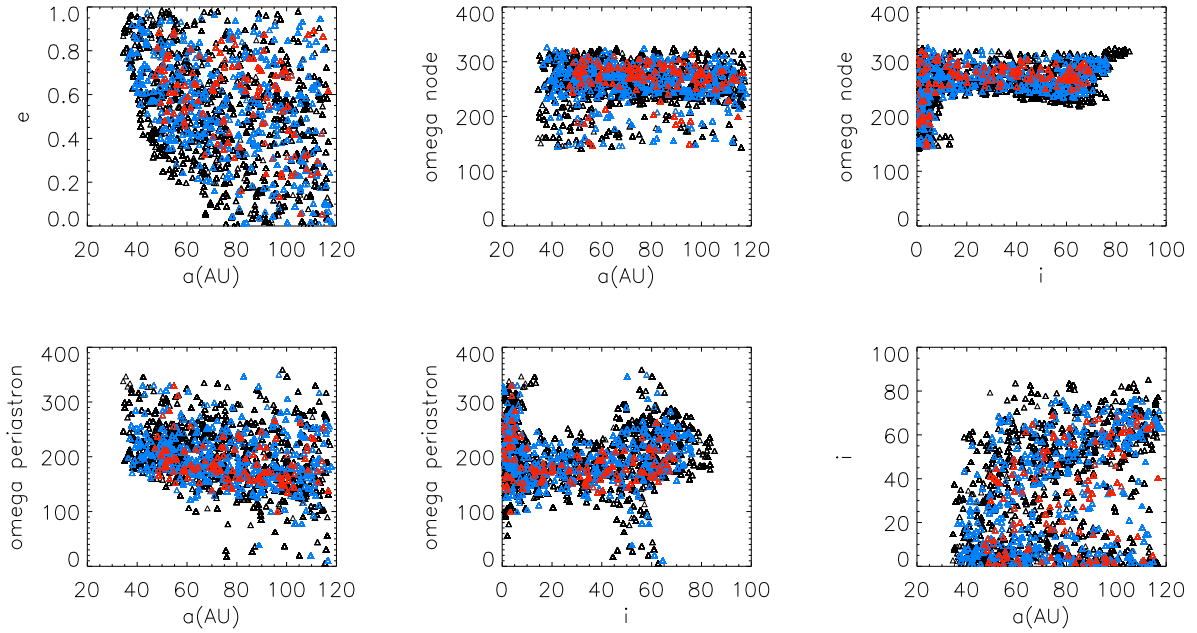
*Acknowledgements.* We are grateful to all people involved during the observations at VLT, NTT, 3.6m telescope and 1.2m Euler Swiss telescope at La Silla. We also thank the TASTE group of Padua for the precious help for EFOSC photometry and Brian Lemaux for his precious help. A.Z., S.D. and D.M. acknowledge partial support from PRIN INAF 2010 “Planetary systems at young ages”. J.C. acknowledges the support of U.S. National Science Foundation under Award No. 1009203. Balmer/Lyman lines in the models were calculated with the modified Stark broadening profiles of Tremblay & Bergeron (2009), kindly made available by the authors. We acknowledge support from the French National Research Agency (ANR) through the GUEPARD project grant ANR10-BLANC0504-01.

We wish to thank the referee for the constructive comments to the paper.

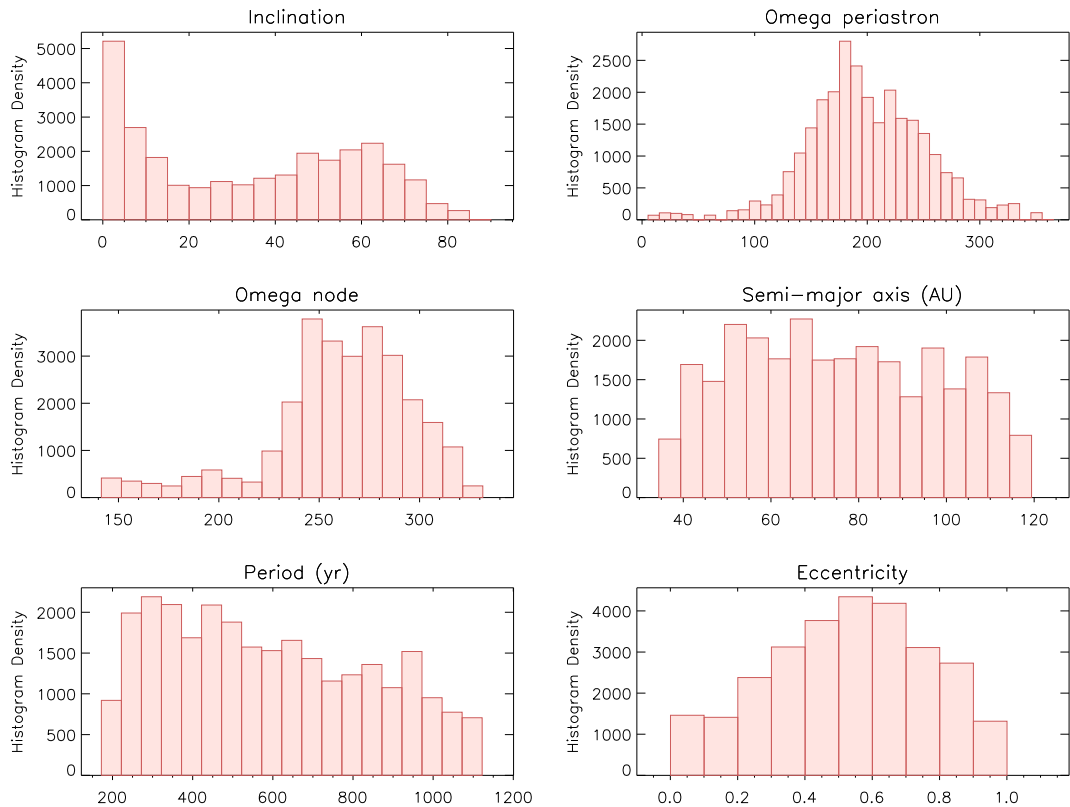
## References

- Abuter, R., Schreiber, J., Eisenhauer, F., et al. 2006, *New A Rev.*, 50, 398
- Allen, K. W. 1977, *Astrophysical quantities*.
- Baraffe, I., Chabrier, G., Barman, T. S., Allard, F., & Hauschildt, P. H. 2003, *A&A*, 402, 701
- Baranne, A., Queloz, D., Mayor, M., et al. 1996, *A&AS*, 119, 373
- Barros, S. C. C., Boue, G., Gibson, N. P., et al. 2013, *ArXiv e-prints*
- Bayo, A., Rodrigo, C., Barrado Y Navascués, D., et al. 2008, *A&A*, 492, 277
- Bergeron, P., Wesemael, F., Dufour, P., et al. 2011, *ApJ*, 737, 28
- Biazzo, K., D’Orazi, V., Desidera, S., et al. 2012, *MNRAS*, 427, 2905
- Bidelman, W. P. 1985, in *Astrophysics and Space Science Library*, Vol. 114, *Cool Stars with Excesses of Heavy Elements*, ed. M. Jaschek & P. C. Keenan, 43–45
- Boisse, I., Bouchy, F., Hébrard, G., et al. 2011, *A&A*, 528, A4
- Bonnet, H., Abuter, R., Baker, A., et al. 2004a, *The Messenger*, 117, 17
- Bonnet, H., Conzelmann, R., Delabre, B., et al. 2004b, in *Society of Photo-Optical Instrumentation Engineers (SPIE) Conference Series*, Vol. 5490, *Society of Photo-Optical Instrumentation Engineers (SPIE) Conference Series*, ed. D. Bonaccini Calia, B. L. Ellerbroek, & R. Ragazzoni, 130–138
- Bonnet, H., Ströbele, S., Biancat-Marchet, F., et al. 2003, in *Society of Photo-Optical Instrumentation Engineers (SPIE) Conference Series*, Vol. 4839, *Society of Photo-Optical Instrumentation Engineers (SPIE) Conference Series*, ed. P. L. Wizinowich & D. Bonaccini, 329–343
- Brown, T. M. 2003, *ApJ*, 593, L125
- Burbidge, E. M., Burbidge, G. R., Fowler, W. A., & Hoyle, F. 1957, *Reviews of Modern Physics*, 29, 547
- Busso, M., Gallino, R., & Wasserburg, G. J. 1999, *ARA&A*, 37, 239
- Butters, O. W., West, R. G., Anderson, D. R., et al. 2010, *A&A*, 520, L10
- Chauvin, G. 2010, in *In the Spirit of Lyot 2010*
- Chauvin, G., Lagrange, A.-M., Bonavita, M., et al. 2010, *A&A*, 509, A52
- Chauvin, G., Lagrange, A.-M., Udry, S., & Mayor, M. 2007, *A&A*, 475, 723
- Cousins, A. W. J. 1983, *South African Astronomical Observatory Circular*, 7, 36
- da Silva, L., Girardi, L., Pasquini, L., et al. 2006, *A&A*, 458, 609
- Delorme, P., Collier Cameron, A., Hebb, L., et al. 2011, *MNRAS*, 413, 2218
- Desidera, S. & Barbieri, M. 2007, *A&A*, 462, 345
- Desidera, S., Carolo, E., Gratton, R., et al. 2011, *A&A*, 533, A90
- Dobbie, P. D., Burleigh, M. R., Levan, A. J., et al. 2005, *MNRAS*, 357, 1049
- D’Orazi, V., Biazzo, K., Desidera, S., et al. 2012, *MNRAS*, 423, 2789
- Dumusque, X., Pepe, F., Lovis, C., et al. 2012, *Nature*, 491, 207
- Duquennoy, A. & Mayor, M. 1991, *A&A*, 248, 485
- Edvardsson, B., Andersen, J., Gustafsson, B., et al. 1993, *A&A*, 275, 101
- Eisenhauer, F., Abuter, R., Bickert, K., et al. 2003, in *Society of Photo-Optical Instrumentation Engineers (SPIE) Conference Series*, Vol. 4841, *Society of Photo-Optical Instrumentation Engineers (SPIE) Conference Series*, ed. M. Iye & A. F. M. Moorwood, 1548–1561
- Els, S. G., Sterzik, M. F., Marchis, F., et al. 2001, *A&A*, 370, L1
- Figueira, P., Marmier, M., Bonfils, X., et al. 2010, *A&A*, 513, L8
- Findeisen, K., Hillenbrand, L., & Soderblom, D. 2011, *AJ*, 142, 23
- Fitzpatrick, E. L. 1999, *PASP*, 111, 63
- Giammichele, N., Bergeron, P., & Dufour, P. 2012, *ApJS*, 199, 29
- Gould, A., Yee, J. C., Bond, I. A., et al. 2012, *ArXiv e-prints*
- Gray, R. O., Corbally, C. J., Garrison, R. F., et al. 2006, *AJ*, 132, 161
- Hamuy, M., Suntzeff, N. B., Heathcote, S. R., et al. 1994, *PASP*, 106, 566
- Han, Z., Eggleton, P. P., Podsiadlowski, P., & Tout, C. A. 1995, *MNRAS*, 277, 1443
- Heintz, W. 2000, *Visual Binary Stars*, ed. P. Murdin
- Hernán-Obispo, M., Gálvez-Ortiz, M. C., Anglada-Escudé, G., et al. 2010, *A&A*, 512, A45
- Holberg, J. B. 2009, *Journal of Physics Conference Series*, 172, 012022
- Holberg, J. B. & Bergeron, P. 2006, *AJ*, 132, 1221
- Holmberg, J., Nordström, B., & Andersen, J. 2009, *A&A*, 501, 941
- Huélamo, N., Figueira, P., Bonfils, X., et al. 2008, *A&A*, 489, L9
- Hurley, J. R., Tout, C. A., & Pols, O. R. 2002, *MNRAS*, 329, 897
- Ireland, M. J., Monnier, J. D., Tuthill, P. G., et al. 2007, *ApJ*, 662, 651
- Jeffries, R. D. & Smalley, B. 1996, *A&A*, 315, L19
- Jeffries, R. D. & Stevens, I. R. 1996, *MNRAS*, 279, 180
- Jorissen, A., Van Eck, S., Mayor, M., & Udry, S. 1998, *A&A*, 332, 877
- Käppeler, F., Gallino, R., Bisterzo, S., & Aoki, W. 2011, *Reviews of Modern Physics*, 83, 157
- Karovska, M., Hack, W., Raymond, J., & Guinan, E. 1997, *ApJ*, 482, L175
- Koester, D. 2010, *Mem. Soc. Astron. Italiana*, 81, 921
- Kowalski, P. M. & Saumon, D. 2006, *ApJ*, 651, L137
- Lafrenière, D., Marois, C., Doyon, R., Nadeau, D., & Artigau, É. 2007, *ApJ*, 660, 770
- Lanza, A. F., Bonomo, A. S., Moutou, C., et al. 2010, *A&A*, 520, A53
- Lenzen, R., Hartung, M., Brandner, W., et al. 2003, in *SPIE Conference Series*, Vol. 4841, 944–952
- Lovis, C., Dumusque, X., Santos, N. C., et al. 2011, *ArXiv e-prints*
- Madhusudhan, N., Burrows, A., & Currie, T. 2011, *ApJ*, 737, 34
- Mamajek, E. E. & Hillenbrand, L. A. 2008, *ApJ*, 687, 1264
- Marois, C., Lafrenière, D., Doyon, R., Macintosh, B., & Nadeau, D. 2006, *ApJ*, 641, 556
- Martin, D. C., Fanson, J., Schiminovich, D., et al. 2005, *ApJ*, 619, L1
- Mason, B. D., Wycoff, G. L., Hartkopf, W. I., Douglass, G. G., & Worley, C. E. 2001, *AJ*, 122, 3466
- Mawet, D., Absil, O., Montagnier, G., et al. 2012, *A&A*, 544, A131
- McClure, R. D. 1984, *PASP*, 96, 117
- McClure, R. D., Fletcher, J. M., & Nemeč, J. M. 1980, *ApJ*, 238, L35
- McClure, R. D. & Woodsworth, A. W. 1990, *ApJ*, 352, 709
- McConnell, R. K. & Gast, P. W. 1972, *Moon*, 5, 41
- McCrea, W. H. 1964, *MNRAS*, 128, 335
- Messina, S., Desidera, S., Lanzafame, A. C., Turatto, M., & Guinan, E. F. 2011, *A&A*, 532, A10
- Messina, S., Desidera, S., Turatto, M., Lanzafame, A. C., & Guinan, E. F. 2010, *A&A*, 520, A15
- Metchev, S. A. & Hillenbrand, L. A. 2009, *ApJS*, 181, 62
- Montes, D., López-Santiago, J., Gálvez, M. C., et al. 2001, *MNRAS*, 328, 45
- Mugrauer, M. & Neuhauser, R. 2005, *MNRAS*, 361, L15
- Murray, N., Chaboyer, B., Arras, P., Hansen, B., & Noyes, R. W. 2001, *ApJ*, 555, 801
- North, P. & Duquennoy, A. 1991, *A&A*, 244, 335
- O’Donovan, F. T., Charbonneau, D., Torres, G., et al. 2006, *ApJ*, 644, 1237
- Perryman, M. A. C., Lindgren, L., Kovalevsky, J., et al. 1997, *A&A*, 323, L49
- Pickles, A. J. 1998, *VizieR Online Data Catalog*, 611, 863
- Pojmanski, G. 2002, *Acta Astron.*, 52, 397
- Pollacco, D. L., Skillen, I., Collier Cameron, A., et al. 2006, *PASP*, 118, 1407
- Porto de Mello, G. F. & da Silva, L. 1997, *ApJ*, 476, L89
- Queloz, D., Henry, G. W., Sivan, J. P., et al. 2001, *A&A*, 379, 279
- Roussel, G., Lacombe, F., Puget, P., et al. 2003, in *SPIE Conference Series*, ed. P. L. Wizinowich & D. Bonaccini, Vol. 4839, 140–149

- Salaris, M., Serenelli, A., Weiss, A., & Miller Bertolami, M. 2009, *ApJ*, 692, 1013
- Scargle, J. D. 1982, *ApJ*, 263, 835
- Setiawan, J., Henning, T., Launhardt, R., et al. 2008, *Nature*, 451, 38
- Simmerer, J., Sneden, C., Ivans, I. L., et al. 2003, *AJ*, 125, 2018
- Skrutskie, M. F., Cutri, R. M., Stiening, R., et al. 2006, *AJ*, 131, 1163
- Smith, G. H. & Redenbaugh, A. K. 2010, *PASP*, 122, 1303
- Steffen, M. 1985, *A&AS*, 59, 403
- Tomkin, J., Lambert, D. L., Edvardsson, B., Gustafsson, B., & Nissen, P. E. 1989, *A&A*, 219, L15
- Torres, C. A. O., Quast, G. R., da Silva, L., et al. 2006, *A&A*, 460, 695
- Torres, G., Fressin, F., Batalha, N. M., et al. 2011, *ApJ*, 727, 24
- Tremblay, P.-E. & Bergeron, P. 2009, *The Astrophysical Journal*, 696, 1755
- Tremblay, P.-E., Bergeron, P., & Gianninas, A. 2011, *ApJ*, 730, 128
- van den Bos, W. H. 1929, *Circular of the Union Observatory Johannesburg*, 80, 59
- van Leeuwen, F. 2007, *A&A*, 474, 653
- Vennes, S. 1999, *ApJ*, 525, 995
- Vennes, S., Kawka, A., & Németh, P. 2011, *MNRAS*, 410, 2095
- Ventura, P., D'Antona, F., Mazzitelli, I., & Gratton, R. 2001, *ApJ*, 550, L65
- Vigan, A., Patience, J., Marois, C., et al. 2012, *A&A*, 544, A9
- Voges, W., Aschenbach, B., Boller, T., et al. 1999, *A&A*, 349, 389
- Williams, P. M. 1975, *MNRAS*, 170, 343
- Zorotovic, M. & Schreiber, M. R. 2012, *ArXiv e-prints*



**Fig. 9.** Monte Carlo simulation results showing orbital parameters for orbital solutions compatible with the observational data. Colors indicate different levels of  $\chi$ -squared values (decreasing from black to blue and finally red). The plots show that some parameters are well constrained in a region of parameters space while others can span all possible values. See 5.1 for information on the Monte Carlo procedures.



**Fig. 10.** Histograms of orbital parameters derived with a Monte Carlo simulation following the example of [Desidera et al. \(2011\)](#).